

**SOLON**

LONG



**SOLON** SOLON SPORTS EQUIPMENT CO., LTD  
速轮运动器材有限公司

LUO LI VILLAGE, ZHENLONG TOWN, HUIYANG DISTRICT, HUIZHOU CITY,  
GUANGDONG, CHINA. 惠州市惠阳区镇隆镇罗沥村日荣工业园

+86 752-3959168    [www.solon-hub.com](http://www.solon-hub.com)    [info@solon-hub.com](mailto:info@solon-hub.com)

SOLON SPORTS EQUIPMENT CO., LTD  
速轮运动器材有限公司

2025

## COMPANY PROFILE

### [公司简介]

惠州速轮运动器材有限公司是一家专业从事自行车五金配件的研发、生产、销售为一体的高新技术企业，主要生产各类高档花鼓（包括山地车花鼓、公路车花鼓、折叠车花鼓、雪地车花鼓等）以及各类高端轮组。速轮公司致力于创造更优美的环境，让人们享受更健康美好的生活。秉承“团结拼搏、创新求精”的精神，不断提升产品品质和服务，赢得了客户的信赖和支持，实现稳健而又快速的成长，随着市场的扩大和进一步满足客服的需求，公司在惠州镇隆巨资自建工业园生产基地。在新起点，新的环境下，公司铝合金花鼓及高档轮组已达年产300万套以上的生产能力。

公司提倡绿色设计，拥有强大的研发团队，不断采用新的技术，为客户提供更具核心竞争力的产品；注重绿色制造，配置先进的高档花鼓的生产设备：3D锻造数台、CNC数控车床60多台、3轴/5轴铣床、钻床、自主研发的成品组立生产线等；严格执行RECH、ROSH等环保标准，全员贯彻落实ISO9001质量管理体系，以先进的管理体系持续提升员工的素质、产品和服务。

公司始终坚持“诚信务实 合作共赢 追求卓越”的合作理念，为客户提供优质的产品和服务，得到了全球客户的信赖，产品出口到欧洲、中东、北美及拉丁美洲等三十多个国家和地区。

Huizhou Solon Sports Equipment Co.Ltd is a high-technical enterprise specializing in R&D, production and Sales for bicycle parts. It mainly produces high performance hubs (Including MTB Hubs, Road Bike hubs, Folding bike hubs and Snow Bike hubs, etc.), And all kinds of high-end wheel sets. Huizhou Solon Sports Equipment Co.Ltd is committed to creating a more beautiful environment for people to enjoy a healthier and better life. Adhering to the spirit of “Teamwork and hardworking, Innovation and precision”, the company has continuously improved product quality and customer service, won the trusts and supports of customers, Then achieved stable and rapid growth. With the expansion of the market and to meet more demands of our customers, the company has invested heavily in building its own industrial park in Zhenlong, Huizhou city. At the new starting point and the new factory, the company's aluminum Hubs and high-end wheel sets have reached an annual production capacity of more than 3 million sets.

Solon takes care about the environment, and has a strong R&D team, who adopts new technologies to develop more competitive hubs, to use environmentally friendly production lines. Solon has many advanced production equipments: several sets of 3D forged machines, more than 60sets CNC machines, 3-Axis and 5-Axis milling machines, drilling machines, self-developed completed products assembling lines, etc. Strictly followed environmental production laws and rules, such as RECH, ROHS standard. Solon workers take and do as ISO 9001 quality management system in the factory, and continuously improve product quality, best delivery and customer service with advanced management system.

Solon always believe “Honest, Win-Win co-operation, excellent” this concept.

Then provides high quality product and service, and has won the trust of global customers. Now its products are exported to more than 30 countries and regions such as Europe, the middle east, North America and Latin America.

## CONTENTS

### [目 录]

ROAD BIKE HUBS - - - - -	P05	AFTER MARKET HUBS - - - - -	P32
MTB BIKE HUBS - - - - -	P15	WHEELS - - - - -	P35
E-BIKE HUBS - - - - -	P25	QUICK RELEASES - - - - -	P37
FAT BIKE & SNOW BIKE HUBS - -	P27	CASSETTER - - - - -	P39
FOLDING BIKE HUBS - - - - -	P29	HYDRAULIC DISC BRAKE - - - - -	P41

### ICON DESCRIPTION

	MICRO SPLINE		CARBON FIBER MATERIAL
	SRAM XD SYSTEM		6 PAWLS SYSTEM
	SRAM XDR SYSTEM		CENTER LOCK ROTOR MOUNTING SYSTEM LICENSED BY SHIMANO
	SHIMANO ROAD 11S SYSTEM		M9 QR/ 15 TA END CAP CONVERTIBLE
	PLANETARY TEETH 18T AND 36T/54T ARE CONVERTIBLE		M9 QR/ 12 TA END CAP CONVERTIBLE



**SOLON**

ROAD BIKE HUBS



## DH945TF

F/R	F
Spoke Hole	24H
Axle Dim	Ø12
Bearings	2 sealed
O.L.D	100mm
PCD	35/35mm
Weight	115g



## DH945TR

F/R	R
Spoke Hole	24H
Axle Dim	Ø 12
Bearings	4 sealed
O.L.D	142mm
PCD	35/51mm
Weight	245g



## DH995TF

F/R	F
Spoke Hole	20/24/28H
Axle Dim	Ø12
Bearings	2 sealed
O.L.D	100mm
PCD	42/42mm
Weight	145g



## DH995TR

F/R	R
Spoke Hole	24/28H
Axle Dim	Ø12
Bearings	4 sealed
O.L.D	142mm
PCD	38/48mm
Weight	250g





## DH917TF

F/R	F
Spoke Hole	20/24/28H
Axle Dim	Ø12
Bearings	2 sealed
O.L.D	100mm
PCD	42/42mm
Weight	150g



## DH969TF

F/R	F
Spoke Hole	24/28/32H
Axle Dim	Ø12
Bearings	2 sealed
O.L.D	100mm
PCD	58/58mm
Weight	183g



## DH917TR

F/R	R
Spoke Hole	24/28H
Axle Dim	Ø 12
Bearings	4 sealed
O.L.D	142mm
PCD	38/48mm
Weight	235g



## DH970TR

F/R	R
Spoke Hole	24/28/32H
Axle Dim	Ø 12
Bearings	4 sealed
O.L.D	142mm
PCD	58/58mm
Weight	412g



## DH536TF

F/R	F
Spoke Hole	20/24/28H
Axle Dim	Ø 12
Bearings	2 sealed
O.L.D	100mm
PCD	58/58mm
Weight	165g



## DH510SF

F/R	F
Spoke Hole	24H
Axle Dim	Ø 9
Bearings	2 sealed
O.L.D	100mm
PCD	45/45mm
Weight	215g



## DH536TR

F/R	R
Spoke Hole	24/28/32H
Axle Dim	Ø12
Bearings	4 sealed
O.L.D	142mm
PCD	58/58mm
Weight	280g



## DH510SR

F/R	R
Spoke Hole	24H
Axle Dim	Ø 10
Bearings	2 sealed
O.L.D	135mm
PCD	45/45mm
Weight	413g





DH546TF

F/R	F
Spoke Hole	24H
Axle Dim	Ø12
Bearings	2 sealed
O.L.D	100mm
PCD	35/35mm
Weight	110g



DH918TF

F/R	F
Spoke Hole	20/24H
Axle Dim	Ø12
Bearings	2 sealed
O.L.D	100mm
PCD	45/45mm
Weight	133g



DH546TR

F/R	R
Spoke Hole	24H
Axle Dim	Ø12
Bearings	4 sealed
O.L.D	142mm
PCD	35/51mm
Weight	230g



DH942TR

F/R	R
Spoke Hole	28H
Axle Dim	Ø12
Bearings	2 sealed
O.L.D	142mm
PCD	49/49mm
Weight	350g



DH993TR

F/R	R
Spoke Hole	24/28H
Axle Dim	Ø12
Bearings	4 sealed
O.L.D	142mm
PCD	39/47mm
Weight	245g



DH939TR

F/R	R
Spoke Hole	24/28H
Axle Dim	Ø12
Bearings	4 sealed
O.L.D	142mm
PCD	49/49mm
Weight	239g



DH947TF

F/R	F
Spoke Hole	24/28/32H
Axle Dim	Ø12
Bearings	2 sealed
O.L.D	100mm
PCD	58/58mm
Weight	165g



DH929SF

F/R	F
Spoke Hole	20/24H
Axle Dim	Ø 9
Bearings	2 sealed
O.L.D	100mm
PCD	58/58mm
Weight	118g



DH947TR

F/R	R
Spoke Hole	24/28/32H
Axle Dim	Ø12
Bearings	4 sealed
O.L.D	142mm
PCD	58/58mm
Weight	265g



DH929SR

F/R	R
Spoke Hole	24/28H
Axle Dim	Ø10
Bearings	4 sealed
O.L.D	130mm
PCD	58/58mm
Weight	240g



DH530SF

F/R	F
Spoke Hole	18/20H
Axle Dim	Ø 9
Bearings	2 sealed
O.L.D	100mm
PCD	31/31mm
Weight	94g



DH509F

F/R	F
Spoke Hole	16/20H
Axle Dim	Ø 9
Bearings	2 sealed
O.L.D	100mm
PCD	31/31mm
Weight	80g



DH530SR

F/R	R
Spoke Hole	24H
Axle Dim	Ø 10
Bearings	4 sealed
O.L.D	130mm
PCD	31/65mm
Weight	230g



DH509R

F/R	R
Spoke Hole	24H
Axle Dim	Ø10
Bearings	4 sealed
O.L.D	130mm
PCD	31/49mm
Weight	230g





DH505F	
F/R	F
Spoke Hole	20/24/28/32H
Axle Dim	Ø 9
Bearings	2 sealed
O.L.D	100mm
PCD	38/38mm
Weight	115g



DH505R	
F/R	R
Spoke Hole	24/28/32/36H
Axle Dim	Ø 10
Bearings	2 sealed
O.L.D	130/135mm
PCD	45/45mm
Weight	336g



DH506F	
F/R	F
Spoke Hole	20/24/28/32/36H
Axle Dim	Ø 9
Bearings	Loose ball
O.L.D	100mm
PCD	38/38mm
Weight	150g



DH506R	
F/R	R
Spoke Hole	24/28/32/36H
Axle Dim	Ø 10
Bearings	Loose ball
O.L.D	130/135mm
PCD	45/45mm
Weight	395g





DH907TF

F/R	F
Spoke Hole	28H
Axle Dim	Ø15
Bearings	2 sealed
O.L.D	100mm
PCD	44/44mm
Weight	175g



DH968TF BOOST

F/R	F
Spoke Hole	28/32/36H
Axle Dim	Ø15
Bearings	2 sealed
O.L.D	110mm
PCD	58/58mm
Weight	180g



DH907TR

F/R	R
Spoke Hole	28H
Axle Dim	Ø12
Bearings	4 sealed
O.L.D	142mm
PCD	42/49mm
Weight	280g



DH946TR BOOST

F/R	R
Spoke Hole	28/32/36H
Axle Dim	Ø12
Bearings	4 sealed
O.L.D	148mm
PCD	58/58mm
Weight	290g



DH927TF BOOST

F/R	F
Spoke Hole	28H
Axle Dim	Ø 15
Bearings	2 sealed
O.L.D	110mm
PCD	44/44mm
Weight	190g



DH936TF

F/R	F
Spoke Hole	28/32/36H
Axle Dim	Ø15
Bearings	2 sealed
O.L.D	100mm
PCD	58/58mm
Weight	180g



DH927TR BOOST

F/R	R
Spoke Hole	28H
Axle Dim	Ø 12
Bearings	4 sealed
O.L.D	148mm
PCD	42/49mm
Weight	295g



DH956TR

F/R	R
Spoke Hole	28/32/36H
Axle Dim	Ø 12
Bearings	4 sealed
O.L.D	142mm
PCD	58/58mm
Weight	285g





### DH938TF BOOST

F/R	F
Spoke Hole	28/32/36H
Axle Dim	Ø15
Bearings	2 sealed
O.L.D	110mm
PCD	58/58mm
Weight	195g



### DH906TF

F/R	F
Spoke Hole	28/32/36H
Axle Dim	Ø15
Bearings	2 sealed
O.L.D	100mm
PCD	58/58mm
Weight	195g



### DH938TR BOOST

F/R	R
Spoke Hole	28/32/36H
Axle Dim	Ø12
Bearings	4 sealed
O.L.D	148mm
PCD	58/58mm
Weight	295g



### DH906TRX

F/R	R
Spoke Hole	28/32/36H
Axle Dim	Ø12
Bearings	4 sealed
O.L.D	142mm
PCD	58/58mm
Weight	300g



### DH928TF

F/R	F
Spoke Hole	28/32/36H
Axle Dim	Ø 15
Bearings	2 sealed
O.L.D	100mm
PCD	58/58mm
Weight	150g



### DH908TF BOOST

F/R	F
Spoke Hole	28/32/36H
Axle Dim	Ø15
Bearings	2 sealed
O.L.D	110mm
PCD	58/60mm
Weight	216g



### DH928TR

F/R	R
Spoke Hole	28/32/36H
Axle Dim	Ø 12
Bearings	4 sealed
O.L.D	142mm
PCD	58/58mm
Weight	285g



### DH908TR BOOST

F/R	R
Spoke Hole	28/32/36H
Axle Dim	Ø12
Bearings	4 sealed
O.L.D	148mm
PCD	60/57mm
Weight	305g





DH909TR

F/R	R
Spoke Hole	24/28/32/36H
Axle Dim	Ø 12
Bearings	2 sealed
O.L.D	142mm
PCD	58/58mm
Weight	390g



DH910TR BOOST

F/R	R
Spoke Hole	28/32/36H
Axle Dim	Ø 12
Bearings	2 sealed
O.L.D	148mm
PCD	58/58mm
Weight	395g



DH932TR

F/R	R
Spoke Hole	24/28/32/36H
Axle Dim	Ø 12
Bearings	2 sealed
O.L.D	142mm
PCD	58/58mm
Weight	390g



DH933TR BOOST

F/R	R
Spoke Hole	28/32/36H
Axle Dim	Ø 12
Bearings	2 sealed
O.L.D	148mm
PCD	58/58mm
Weight	405g



DH905F

F/R	F
Spoke Hole	24/28/32/36H
Axle Dim	Ø 9
Bearings	2 sealed
O.L.D	100mm
PCD	58/58mm
Weight	232g



DH905R

F/R	R
Spoke Hole	24/28/32/36H
Axle Dim	Ø 10
Bearings	4 sealed
O.L.D	135mm
PCD	58/58mm
Weight	480g



DH901YF

F/R	F
Spoke Hole	24/28/32/36H
Axle Dim	Ø 9
Bearings	2 sealed
O.L.D	100mm
PCD	58/58mm
Weight	283g



DH901YR

F/R	R
Spoke Hole	24/28/32/36H
Axle Dim	Ø 10
Bearings	2 sealed
O.L.D	135mm
PCD	58/58mm
Weight	467g





DH802F

F/R	F
Spoke Hole	24/28/32/36H
Axle Dim	Ø 9
Bearings	Loose ball
O.L.D	100mm
PCD	58/58mm
Weight	268g



DH802R

F/R	R
Spoke Hole	24/28/32/36H
Axle Dim	Ø 10
Bearings	Loose ball
O.L.D	135mm
PCD	58/58mm
Weight	468g



DH990TF

F/R	F
Spoke Hole	24/28H
Axle Dim	Ø 15
Bearings	2 sealed
O.L.D	100mm
PCD	42/42mm
Weight	135g



DH990TR

F/R	R
Spoke Hole	24/28H
Axle Dim	Ø 12
Bearings	4 sealed
O.L.D	142mm
PCD	42/45mm
Weight	247g



DH991TF BOOST

F/R	F
Spoke Hole	24/28H
Axle Dim	Ø15
Bearings	2 sealed
O.L.D	110mm
PCD	42/42mm
Weight	140g



DH991TR BOOST

F/R	R
Spoke Hole	28H
Axle Dim	Ø12
Bearings	4 sealed
O.L.D	148mm
PCD	42/52mm
Weight	250g



DH992TR BOOST

F/R	R
Spoke Hole	28H
Axle Dim	Ø12
Bearings	4 sealed
O.L.D	148mm
PCD	38/45mm
Weight	250g





DH919TF BOOST

F/R	F
Spoke Hole	24/28/32/36H
Axle Dim	Ø15
Bearings	2 sealed
O.L.D	110mm
PCD	45/45mm
Weight	138g



DH919TRX BOOST

F/R	R
Spoke Hole	24/28/32/36H
Axle Dim	Ø12
Bearings	4 sealed
O.L.D	148mm
PCD	58/58mm
Weight	270g



DH918TF

F/R	F
Spoke Hole	24/28/32/36H
Axle Dim	Ø 15
Bearings	2 sealed
O.L.D	100mm
PCD	45/45mm
Weight	133g



DH918TR

F/R	R
Spoke Hole	24/28/32/36H
Axle Dim	Ø 12
Bearings	4 sealed
O.L.D	142mm
PCD	58/58mm
Weight	266g



DH950TRM

F/R	R
Spoke Hole	28/32/36H
Axle Dim	Ø12
Bearings	4 sealed
O.L.D	142mm
PCD	58/58mm
Weight	254g



DH953TRM BOOST

F/R	R
Spoke Hole	28/32/36H
Axle Dim	Ø12
Bearings	4 sealed
O.L.D	148mm
PCD	58/58mm
Weight	259g





DH814F

F/R	F
Spoke Hole	20/24/28/32H
Axle Dim	Ø 9
Bearings	Loose ball
O.L.D	100mm
PCD	45/45mm
Weight	230g



DH814R

F/R	R
Spoke Hole	24/28/32/36H
Axle Dim	Ø 10
Bearings	Loose ball
O.L.D	135mm
PCD	45/45mm
Weight	406g



DH914F

F/R	F
Spoke Hole	20/24/28/32/36H
Axle Dim	Ø 9
Bearings	2 sealed
O.L.D	100mm
PCD	45/45mm
Weight	228g



DH914R

F/R	R
Spoke Hole	24/28/32/36H
Axle Dim	Ø10
Bearings	2 sealed
O.L.D	135mm
PCD	45/45mm
Weight	399g



DH-E396TF

F/R	F
Spoke Hole	28H
Axle Dim	Ø15
Bearings	2 sealed
O.L.D	100mm
PCD	48/48mm
Weight	130g



DH-E396TR

F/R	R
Spoke Hole	28H
Axle Dim	Ø 12
Bearings	4 sealed
O.L.D	142mm
PCD	48/65mm
Weight	390g





## DH-E390SR

F/R	R
Spoke Hole	32/36H
Axle Dim	Ø10
Bearings	4 sealed
O.L.D	135mm
PCD	62/62mm
Weight	420g

DH-E391TRM  
BOOST

F/R	R
Spoke Hole	32/36H
Axle Dim	Ø12
Bearings	4 sealed
O.L.D	148mm
PCD	62/62mm
Weight	405g



## DH-E392TR

F/R	R
Spoke Hole	32/36H
Axle Dim	Ø 12
Bearings	4 sealed
O.L.D	142mm
PCD	62/62mm
Weight	430g

DH-E393TRM  
BOOST

F/R	R
Spoke Hole	32/36H
Axle Dim	Ø 12
Bearings	4 sealed
O.L.D	148mm
PCD	62/62mm
Weight	435g



## DH-E395TF

F/R	F
Spoke Hole	28H
Axle Dim	Ø15
Bearings	2 sealed
O.L.D	100mm
PCD	48/48mm
Weight	140g



## DH-E395TR

F/R	R
Spoke Hole	28H
Axle Dim	Ø 12
Bearings	4 sealed
O.L.D	142mm
PCD	48/65mm
Weight	400g



## DH802SF

F/R	F
Spoke Hole	32/36H
Axle Dim	Ø 9
Bearings	2 sealed
O.L.D	100mm
PCD	58/58mm
Weight	290g



## DH309SF

F/R	R
Spoke Hole	32/36H
Axle Dim	Ø 9
Bearings	2 sealed
O.L.D	135mm
PCD	58/58mm
Weight	345g





### DH301F

F/R	F
Spoke Hole	28/32/36H
Axle Dim	Ø 9
Bearings	Loose ball
O.L.D	135mm
PCD	58/58mm
Weight	372g



### DH215SR-5S

F/R	R
Spoke Hole	20H
Axle Dim	Ø 10
Bearings	4 sealed
O.L.D	95mm
PCD	43/48mm
Weight	265g



### DH301R

F/R	R
Spoke Hole	28/32/36H
Axle Dim	Ø10
Bearings	Loose ball
O.L.D	170mm
PCD	58/58mm
Weight	495g



### DH230SR

F/R	R
Spoke Hole	20H
Axle Dim	Ø10
Bearings	3 sealed
O.L.D	85mm
PCD	38/50mm
Weight	190g



### DH303TF

F/R	F
Spoke Hole	28/32/36H
Axle Dim	Ø15
Bearings	2 sealed
O.L.D	150mm
PCD	58/58mm
Weight	247g



### DH503SF

F/R	F
Spoke Hole	20/24/28H
Axle Dim	Ø 9
Bearings	2 sealed
O.L.D	74mm
PCD	38/38mm
Weight	147g



### DH303TR

F/R	R
Spoke Hole	28/32/36H
Axle Dim	Ø 12
Bearings	4 sealed
O.L.D	197mm
PCD	58/58mm
Weight	387g



### DH504SF

F/R	F
Spoke Hole	12/16/20H
Axle Dim	Ø 9
Bearings	2 sealed
O.L.D	74mm
PCD	31/31mm
Weight	70g



DH507SF

F/R	F
Spoke Hole	20/24H
Axle Dim	Ø 9
Bearings	2 sealed
O.L.D	100mm
PCD	45/45mm
Weight	108g



DH518SR

F/R	R
Spoke Hole	24H
Axle Dim	Ø10
Bearings	4 sealed
O.L.D	118mm
PCD	45/45mm
Weight	255g



DH519SR

F/R	R
Spoke Hole	20/24/28H
Axle Dim	Ø10
Bearings	4 sealed
O.L.D	118mm
PCD	45/45mm
Weight	245g



SL-X01TF

F/R	F
Spoke Hole	20/24H
Axle Dim	Ø 12
Bearings	2 sealed
O.L.D	100mm
PCD	40/40mm
Weight	105g



SL-X01TR

F/R	R
Spoke Hole	24H
Axle Dim	Ø12
Bearings	4 sealed
O.L.D	142mm
PCD	40/52mm
Weight	205g



SL-X02TF

F/R	F
Spoke Hole	20/24H
Axle Dim	Ø12
Bearings	2 sealed
O.L.D	100mm
PCD	40/40mm
Weight	100g



SL-X02TR

F/R	R
Spoke Hole	24H
Axle Dim	Ø12
Bearings	4 sealed
O.L.D	142mm
PCD	40/52mm
Weight	220g







SL-X03TF BOOST

F/R	F
Spoke Hole	28H
Axle Dim	Ø15
Bearings	2 sealed
O.L.D	110mm
PCD	40/40mm
Weight	95g



SL-X05TF BOOST

F/R	F
Spoke Hole	28H
Axle Dim	Ø15
Bearings	2 sealed
O.L.D	110mm
PCD	40/40mm
Weight	110g



SL-X03TRM BOOST

F/R	R
Spoke Hole	28H
Axle Dim	Ø12
Bearings	4 sealed
O.L.D	148mm
PCD	40/52mm
Weight	205g



SL-X05TRX BOOST

F/R	R
Spoke Hole	28H
Axle Dim	Ø12
Bearings	4 sealed
O.L.D	148mm
PCD	40/52mm
Weight	215g



SL-X04TF BOOST

F/R	F
Spoke Hole	28H
Axle Dim	Ø15
Bearings	2 sealed
O.L.D	110mm
PCD	40/40mm
Weight	105g



SL-X06TF BOOST

F/R	F
Spoke Hole	28H
Axle Dim	Ø15
Bearings	2 sealed
O.L.D	110mm
PCD	40/40mm
Weight	112g



SL-X04TR BOOST

F/R	R
Spoke Hole	28H
Axle Dim	Ø12
Bearings	4 sealed
O.L.D	148mm
PCD	40/52mm
Weight	218g



SL-X06TRX BOOST

F/R	R
Spoke Hole	28H
Axle Dim	Ø12
Bearings	4 sealed
O.L.D	148mm
PCD	40/52mm
Weight	220g



MTB Wheels  
SW-24902

FRONT

MODEL	29" 28H
RIM	Carbon
HUB	2 sealed
	AXLE AL-7075
	O.L.D: Ø15*110
SPOKE	Stainless steel
	14/15g
Weight	770g

REAR

MODEL	29" 28H
RIM	Carbon
HUB	4 sealed
	AXLE AL-7075
	O.L.D: Ø12*148
SPOKE	Stainless steel
	14/15g
Weight	940g



MTB Wheels  
SW-24903

FRONT

MODEL	29" 28H
RIM	Carbon
HUB	2 sealed
	AXLE AL-7075
	O.L.D: Ø15*110
SPOKE	Stainless steel
	14/15g
Weight	740g

REAR

MODEL	29" 28H
RIM	Carbon
HUB	4 sealed
	AXLE AL-7075
	O.L.D: Ø12*148
SPOKE	Stainless steel
	14/15g
Weight	890g

FRONT

MODEL	700C 24H
RIM	Carbon
HUB	2 sealed
	AXLE AL-7075
	O.L.D: Ø12*100
SPOKE	Stainless steel
	14/18g
Weight	775g

REAR

MODEL	700C 24H
RIM	Carbon
HUB	4 sealed
	AXLE AL-7075
	O.L.D: Ø12*142
	Shimano 11S
SPOKE	Stainless steel
	14/18g
Weight	815g



Road Wheels  
SW-24702

FRONT

MODEL	700C 24H
RIM	Carbon
HUB	2 sealed
	AXLE AL-7075
	O.L.D: Ø12*100
SPOKE	Stainless steel
	14/18g
Weight	820g

REAR

MODEL	700C 24H
RIM	Carbon
HUB	4 sealed
	AXLE AL-7075
	O.L.D: Ø12*142
	Shimano 11S
SPOKE	Stainless steel
	14/18g
Weight	840g



Road Wheels  
SW-24703



### QR-01

Material steel Axle w/plastic cap  
 Size 109/112/115/145/148/151  
 Axle 45#  
 Weight 53/55/56/59/60/61g



### QR-02

Material steel Axle w/alloy cap  
 Size 109/112/115/145/148/151  
 Axle 45#  
 Weight 45/46/47/50/51/52g



### QR-03

Material steel Axle w/alloy cap  
 Size 109/112/115/145/148/151  
 Axle 45#  
 Weight 54/55/56/60/61/62g



### QR-05

Material steel Axle w/alloy cap  
 Size 109/112/115/145/148/151  
 Axle 45#  
 Weight 47/48/49/56/57/58g



### QR-06

Material steel Axle w/alloy cap  
 Size 109/112/115/145/148/151  
 Axle 45#  
 Weight 40/42/43/49/50/51g



### QRT-12

Material 7075 T6  
 Size Ø12\*180mm  
 Axle 7075 T6  
 Detail M12\*1.0  
 M12\*1.5  
 M12\*1.75  
 Weight 94.5g



### QRT-16

Material 7075 T6  
 Size Ø12\*180mm  
 Axle 7075 T6  
 Detail M12\*1.0  
 M12\*1.5  
 M12\*1.75  
 Weight 46g



### QRT-20

Material 7075 T6  
 Size Ø12\*180mm  
 Axle 7075 T6  
 Detail M12\*1.0  
 M12\*1.5  
 M12\*1.75  
 Weight 94.5g





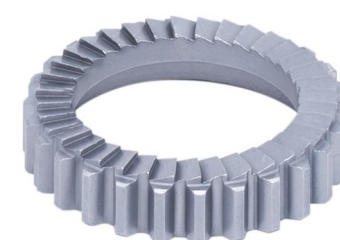
### TJ-436608A

With 60 Teeth, 6 pawls  
Material: AL-7075  
System: Shimano 10/11sp  
Weight:78g



### TD-11A

With 26 Teeth, 18T/36T/54T  
Material: AL-7075  
System: Shimano 10/11sp  
Weight:61g



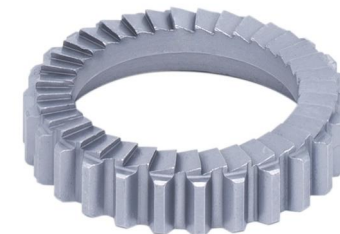
### TJ-436608X

With 60 Teeth, 6 pawls  
Material: AL-7075  
System: SRAM-XD/XDR  
Weight:70g



### TDR

With 26 Teeth, 18T/36T/54T  
Material: AL-7075  
System: SRAM-XD/XDR  
Weight:50g



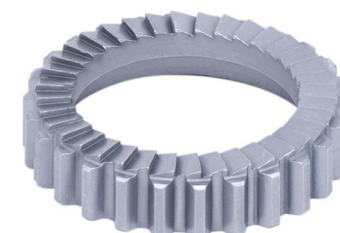
### TJ-436608M

With 60 Teeth, 6 pawls  
Material: AL-7075  
System: Micro Spline  
Weight:74g



### TDM

With 26 Teeth, 18T/36T/54T  
Material: AL-7075  
System: Micro Spline  
Weight:56g







## SL-M510

**SYSTEM**  
Open system, Dual piston  
Easy installation, adjustment and maintenance

**WEIGHT**  
Front wheel-240 grams/Rear wheel-255 grams(Excludes rotor, adapter & mounting bolts)  
Available: SL-M510-Designed for short reach

**ROTOR**  
Round type (Φ160)  
Diameter: Φ160mm  
Weight: 96 grams  
Also available: Φ180mm

**FLUID**  
Non-corrosive mineral oil  
Excellent heat expansion properties

**CALIPER**  
Forged aluminum body  
Finish: Black

**LEVER**  
Aluminum lever & Cast aluminum bracket  
SL-M510: Reach 86-90mm  
One piece bracket  
3 finger blade  
Finish: Black

**PADS**  
Organic compound  
Easy replacement  
Also available: Metal ceramic compound



## SL-M520

**SYSTEM**  
Open system, Dual piston  
Easy installation, adjustment and maintenance

**WEIGHT**  
Front wheel-280 grams/Rear wheel-300 grams (Excludes rotor, adapter & mounting bolts)  
Available: SL-M520-Designed for short reach

**ROTOR**  
Round type (Φ160)  
Diameter: Φ160mm  
Weight: 130 grams  
Also available: Φ180mm

**FLUID**  
Non-corrosive mineral oil  
Excellent heat expansion properties

**CALIPER**  
Forged aluminum body  
Finish: Black

**LEVER**  
Aluminum lever & Cast aluminum bracket  
SL-M520: Reach 86-90mm  
One piece bracket  
3 finger blade  
Finish: Black

**PADS**  
Organic compound Easy replacement  
Also available: Metal ceramic compound



## SL-E530

**SYSTEM**  
Open system, Dual piston  
Easy installation, adjustment and maintenance

**WEIGHT**  
Front wheel-290 grams/Rear wheel-310 grams (Excludes rotor, adapter & mounting bolts)  
Available: SL-E530-Designed for short reach

**ROTOR**  
Round type (Φ160)  
Diameter: Φ160mm  
Weight: 130 grams  
Also available: Φ180mm

**FLUID**  
Non-corrosive mineral oil  
Excellent heat expansion properties

**CALIPER**  
Forged aluminum body  
Finish: Black

**LEVER**  
Aluminum lever & Cast aluminum bracket  
SL-E530: Reach 86-90mm  
One piece bracket  
4 finger blade  
Finish: Black

**PADS**  
Organic compound  
Easy replacement  
Also available: Metal ceramic compound



## SL-K501

**SYSTEM**  
Open system, Dual piston  
Easy installation, adjustment and maintenance

**WEIGHT**  
Front wheel-250 grams/Rear wheel-280 grams (Excludes rotor, adapter & mounting bolts)  
Available: SL-K501-Designed for short reach

**ROTOR**  
Round type (Φ140)  
Diameter: Φ140mm  
Weight: 100 grams  
Also available: Φ160mm

**FLUID**  
Non-corrosive mineral oil  
Excellent heat expansion properties

**CALIPER**  
Forged aluminum body  
Finish: Black

**LEVER**  
Aluminum lever & Cast aluminum bracket  
SL-K501: Reach 60-62mm  
One piece bracket  
1.5 finger blade  
Finish: Black

**PADS**  
Organic compound Easy replacement  
Also available: Metal ceramic compound





## SL-R610

**SYSTEM**  
Open system, Dual piston  
Easy installation, adjustment and maintenance

**WEIGHT**  
Front wheel-275 grams/Rear wheel-295 grams  
(Excludes rotor, adapter & mounting bolts)

**ROTOR**  
1.8mm thickness

**FLUID**  
Non-corrosive mineral oil  
Excellent heat expansion properties

**CALIPER**  
Forged aluminum body  
Finish:Black

**LEVER**  
Aluminum lever & Cast aluminum bracket  
SL-R610:Reach 86-90mm  
One piece bracket  
2 finger blade  
Finish:Black

**PADS**  
Organic compound  
Easy replacement  
Also available: Metal ceramic compound



## SL-E650

**SYSTEM**  
Open system, four piston  
Easy installation, adjustment and maintenance

**WEIGHT**  
Front wheel-290 grams/Rear wheel-310 grams  
(Excludes rotor, adapter & mounting bolts)

**ROTOR**  
2.3mm thickness  
6 Bolt : TR-17  
Center Lock : TR-45

**FLUID**  
Non-corrosive mineral oil  
Excellent heat expansion properties

**CALIPER**  
Forged aluminum body  
Finish;Black

**LEVER**  
Aluminum lever & Cast aluminum bracket  
SL-E650:Reach 86-90mm  
One piece bracket  
3 finger blade  
Finish;Black

**PADS**  
Organic compound Easy replacement  
Also available: Metal ceramic compound



## SL-E550

**SYSTEM**  
Open systemDual piston  
Easy installation, adjustment and maintenance

**WEIGHT**  
Front wheel-295 grams/Rear wheel-315 grams  
(Excludes rotor, adapter & mounting bolts)

**ROTOR**  
2.3mm thickness  
6 Bolt : TR-17  
Center Lock : TR-45

**FLUID**  
Non-corrosive mineral oil  
Excellent heat expansion properties

**CALIPER**  
Forged aluminum body  
Finish:Black

**LEVER**  
Aluminum lever & Cast aluminum bracket  
SL-E550:Reach 86-90mm  
One piece bracket  
4 finger blade  
Finish:Black

**PADS**  
Organic compound  
Easy replacement  
Also available: Metal ceramic compound



## SL-R210

**SYSTEM**  
Closed system,Dual piston  
Easy installation, adjustment and maintenance

**WEIGHT**  
Front wheel-202 grams/Rear wheel-203 grams  
(Excludes rotor, adapter & mounting bolts)

**ROTOR**  
1.8mm thickness

**FLUID**  
Non-corrosive mineral oil  
Excellent heat expansion properties

**CALIPER**  
Forged aluminum body  
Finish;Black

**PADS**  
Organic compound Easy replacement  
Also availableMetal ceramic compound