

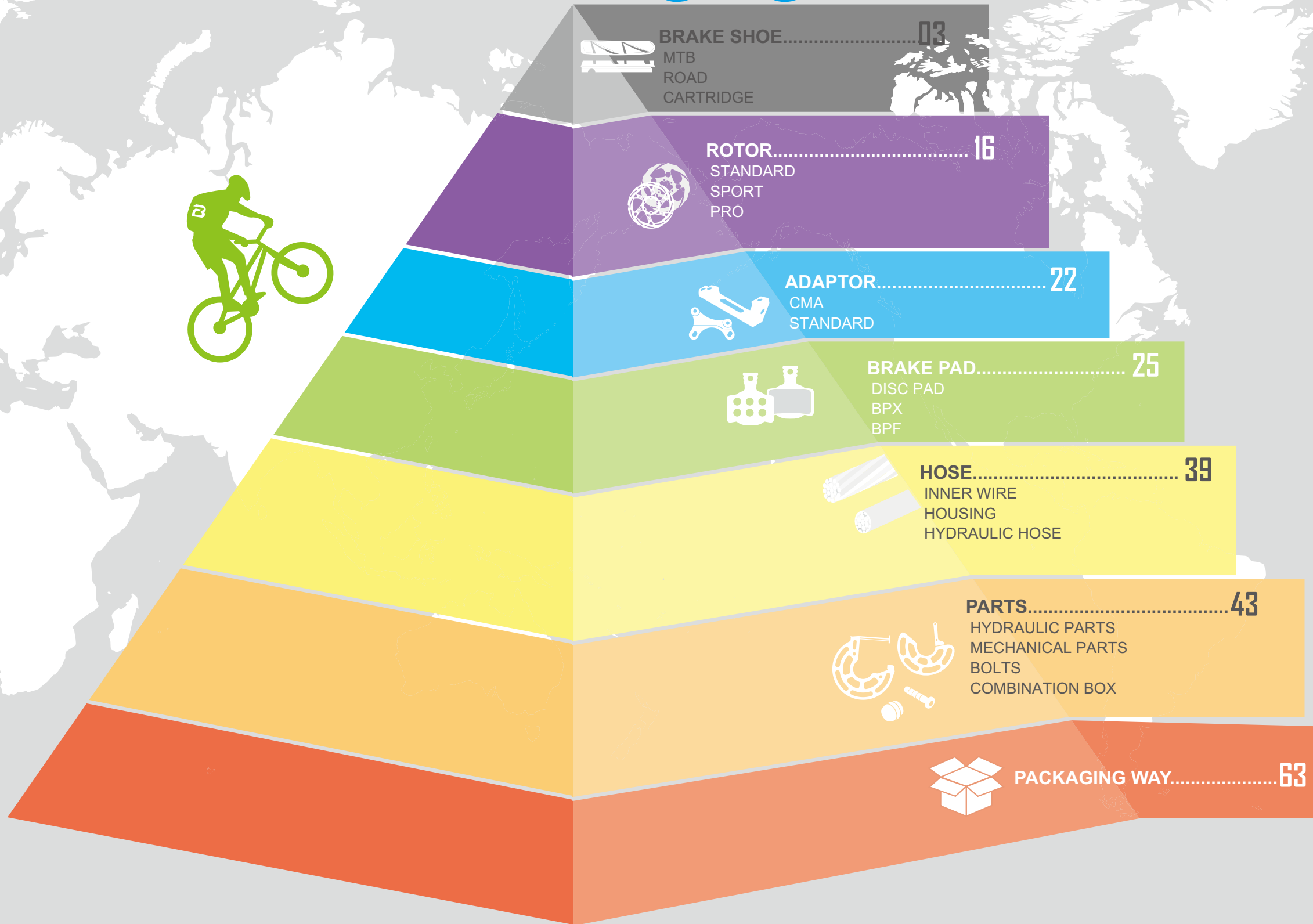


BRAKCO

OEM/ODM

2019.01.31(D版)

CONTENTS



BRAKE SHOE.....03
MTB
ROAD
CARTRIDGE



ROTOR..... 16
STANDARD
SPORT
PRO



ADAPTOR..... 22
CMA
STANDARD



BRAKE PAD..... 25
DISC PAD
BPX
BPF



HOSE..... 39
INNER WIRE
HOUSING
HYDRAULIC HOSE



PARTS..... 43
HYDRAULIC PARTS
MECHANICAL PARTS
BOLTS
COMBINATION BOX



PACKAGING WAY..... 63

ICON GUIDE

Compound & Backplate for disc pad



Organic compound for daily use, better braking power in dry condition



E-bike compound for excellent instant braking power control and long life-span



Sintered compound for excellent heat-resistance and abrasion resistance, good performance under long heavy braking, especially in wet condition

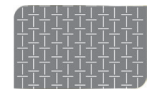


Tranquila compound for smooth braking power and limited noise

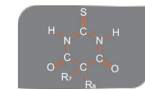


Grooved backplate for better heat-dissipation

Brake shoes and disc pads



Synthetical fiber



Nitrile rubber



Noise free



Contoured spacers for better alignment



All weather compound



Kevlar® to reinforce the braking power



High friction coefficient

Indicator spring



SUS301 stainless steel



The thickness 0.5mm



Precise lasering

Head of inner wire



SHIMANO road brake



SHIMANO shift



CAMPAGNOLO road brake



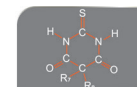
CAMPAGNOLO shift



MTB brake



BRAKE SHOE



Nitrile rubber



Synthetical fiber



Noise free



Contoured spacers for better alignment

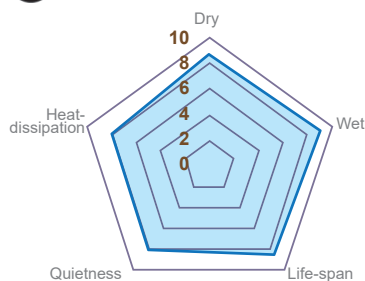


The ultimate performance R-502, C6 compound

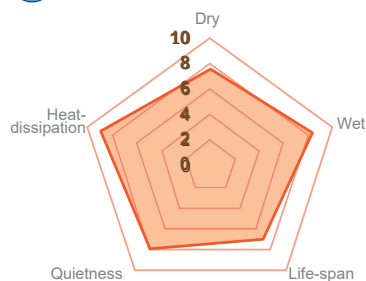
- > Direct reaction both in wet / dry.
- > 30% more braking power.

Road for Carbon

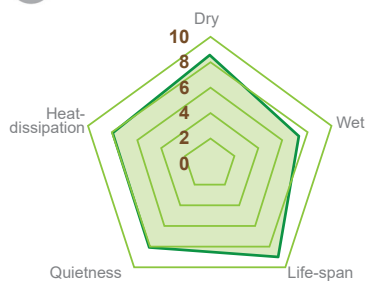
L2 Balanced performance



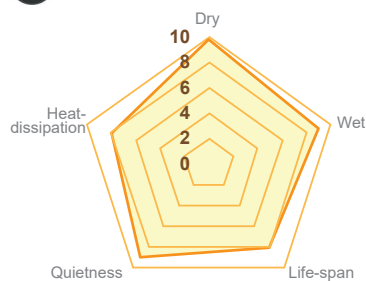
B Basic



L4 Extra life-span

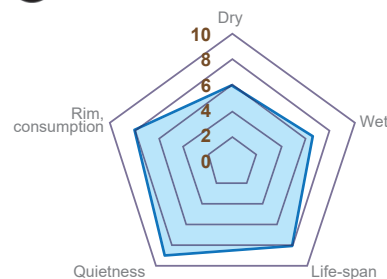


L6 Professional

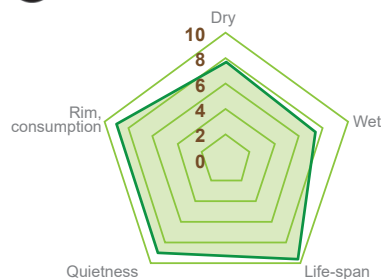


Road for Alloy

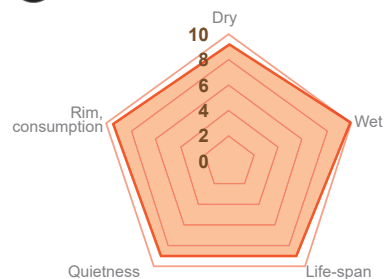
A2 Standard



A4 Advanced

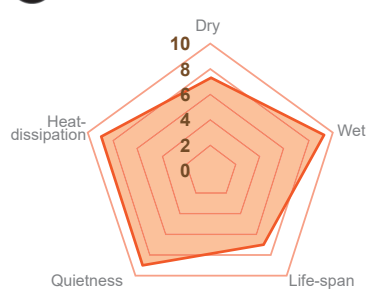


A6 Professional

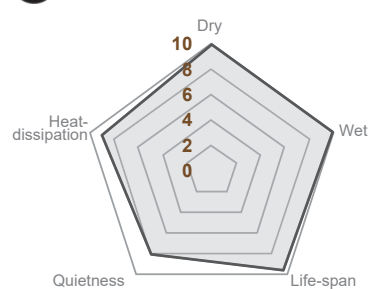


MTB

A2 Standard



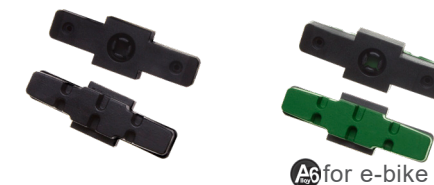
A4 Advanced



Hydraulic rim brake

M-950

Length 50 mm
 Compound A2 / A6
 Color BK / G



M-990

Length 50 mm
 holder plastic holder / CNC machined alloy holder
 Compound A1
 Color G Y R



V-brake

M-971V

Length 75 mm
 Compound A4
 Color G



M-972V

Length 80 mm
 Compound A4
 Color R



M-902V

Length 72 mm
 Compound A2
 Color BK



M-928V

Length 64 mm
 Compound A2
 Color BK



M-935V

Length 55 mm
 Compound A2
 Color BK



M-945V

Length 72 mm
 Compound A2
 Color BK Y R



V-brake

M-947V

Length 70 mm
 Compound A2
 Color **BK** **Y** **R**



M-948V

Length 60 mm
 Compound A1 / A2
 Color **BK** **B** **Y** **G** **R** **PU** **O** **BK**



A1 for BMX squeal !!

M-956V

Length 72 mm
 Compound A2 / A3
 Color **BK** **G** **R** **B** **Y** **PK** **WT** **O** **WT**



A3 for BMX squeal !!

M-959V

Length 72 mm
 Compound A2
 Color **BK**



M-960V

Length 72 mm
 Compound A1 / A2
 Color **BK** **B** **Y** **G** **R** **PU** **O** **WT** **G**



A1 for BMX squeal !!

M-963V

Length 72 mm
 Compound A2
 Color **BK** **BK**



M-967V

Length 65 mm
 Compound A2
 Color **BK**



M-968V

Length 55 mm
 Compound A2
 Color **BK**



for folding bike mini velo

U-brake

M-930U

Length 53 mm
 Length of Post 22L steel
 Compound A2
 Color **BK**



M-930UA

Length 53 mm
 Length of Post 25L steel
 Compound A2
 Color **BK**



M-939U

Length 63 mm
 Length of Post 24.5L steel
 Compound A2
 Color **BK**



Canti-brake

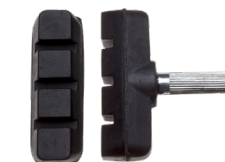
M-931

Length 53 mm
 Length of Post 26L steel
 Compound A2
 Color **BK**



M-933

Length 45 mm
 Length of Post 26L steel
 Compound A2
 Color **BK**



M-934

Length 60 mm
 Length of Post 30L steel
 Compound A2
 Color **BK**



M-935

Length 55 mm
 Length of Post 30L steel
 Compound A2
 Color **BK**



Canti-brake

M-936

Length 65 mm
 Length of Post 30L steel
 Compound A2
 Color BK



M-937

Length 60 mm
 Length of Post 30L steel
 Compound A2
 Color BK



M-938

Length 65 mm
 Length of Post 30L alloy
 Compound A2
 Color BK R GY



M-939

Length 63 mm
 Length of Post 30L alloy
 Compound A4
 Color R



M-939

Length 63 mm
 Length of Post 30L alloy
 Compound A2
 Color BK



M-945

Length 72 mm
 Length of Post 35L steel / 35L alloy
 Compound A2
 Color BK



M-947

Length 70 mm
 Length of Post 30L steel
 Compound A2
 Color BK Y R



M-948

Length 60 mm
 Length of Post 30L steel
 Compound A2
 Color BK



Canti-brake

M-959

Length 72 mm
 Length of Post 30L alloy
 Compound A2
 Color BK



M-960

Length 72 mm
 Length of Post 30L steel
 Compound A2
 Color BK



Road-brake

199

Length 40 mm
 Compound A2
 Color BK



201

Length 35 mm
 Compound A2
 Color BK



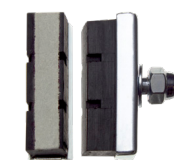
203

Length 35 mm / 40 mm
 Compound A2
 Color BK



203MW with leather for better braking in wet, perfect for UK weather.

Length 40 mm
 Compound A2
 Color BK WT



207

Length 40 mm
 Compound A2
 Color BK



Road-brake

209

Length 50 mm
 Compound A2
 Color BK



250

Length 45 mm
 Compound A2
 Color BK



MX-300

Length 45 mm
 Compound A2
 Color BK



R-450 Flush-in bolt design

Length 50 mm
 Compound A2
 Color BK GY



R-451

Length 50 mm
 Compound A2
 Color BK GR R B



R-452 Flush-in bolt design

Length 50 mm
 Compound A2
 Color BK



R-458 Flush-in bolt design & Angle-adjustable

Length 55 mm
 Compound A2
 Color BK



R-463 Flush-in bolt design & Angle-adjustable

Length 55 mm
 Compound A2
 Color BK



CARTRIDGE



OVERVIEW

ROAD replacement pad



Standard



Basic cork



Advanced



Balanced performance



Professional



Basic



Ceramic rim only

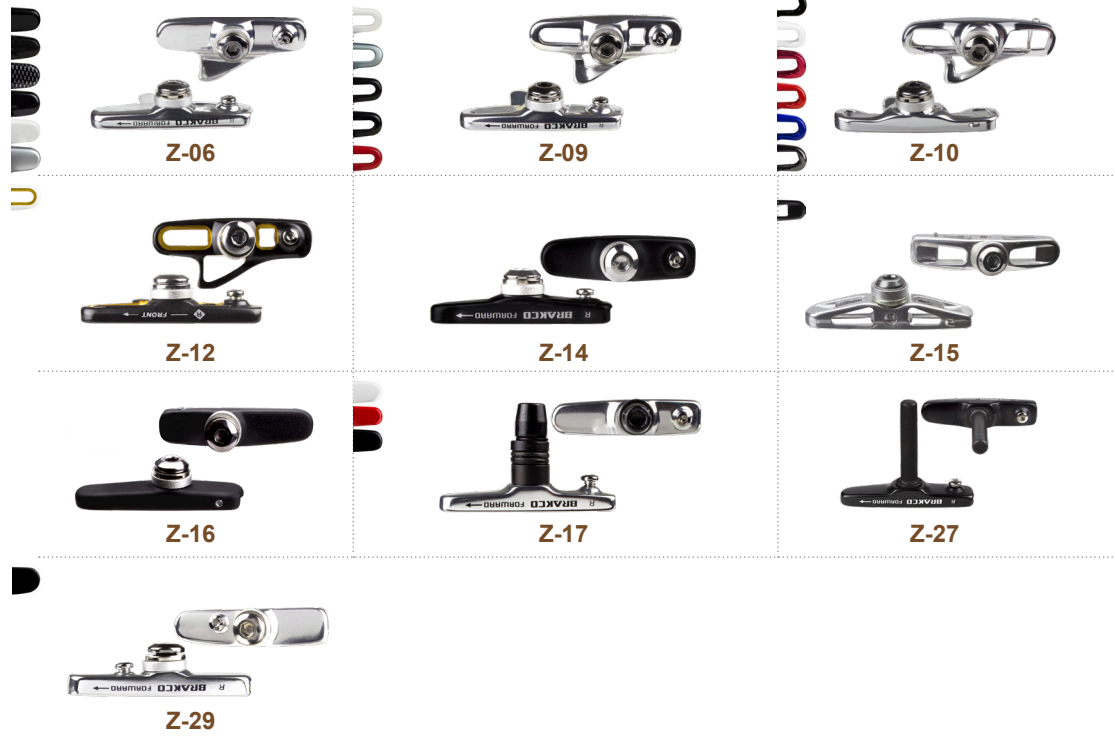


Extra life-span



Professional

For SHIMANO



For CAMPAGNOLO



ITEM NO.	Photo	Material								System		
		Alloy rim			Carbon rim					SHIMANO	CAMPAGNOLO	
		A2 Alloy 2	A4 Alloy 4	A6 Alloy 6	K1 Ceramic 1	C3 Carbon 3	C1 Carbon 1	C2 Carbon 2	C4 Carbon 4			C6 Carbon 6
R-401		•									•	
R-453			•	•							•	
R-501			•	•	•	•	•	•	•		•	
R-504				•				•	•		•	
R-456		•				•		•			•	
R-457		•									•	
R-462			•									•
R-460		•	•	•	•	•	•	•	•			•

ITEM NO.	Photo	Material									System	
		Alloy rim			Carbon rim						SHIMANO	CAMPAGNOLO
		A2 Alloy	A4 Alloy	A6 Alloy	K1	C3	C1	C2	C4	C6		
R-461		•									•	
R-470		•									•	
R-471		•									•	
R-473						•					•	
R-474						•						•
R-477				•							•	
R-500		•	•								•	
R-502	Thickness:10 mm 			•		•		•	•	•	•	
R-503	Thickness:8.5 mm 			•		•		•	•	•	•	

OVERVIEW MTB replacement pad



ITEM NO.	Photo	Length	Material		
			Alloy rim	Carbon rim	
			A2 Alloy	C3	C2
M-901VCR		78mm	•		
M-903VCR		72mm	•		
M-945VCR		72mm	•	•	
M-960VCR		72mm	•		•
M-959VCR		72mm	•	•	
M-966VCR		72mm	•		

ROTOR



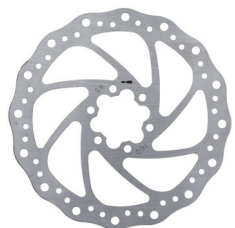
STANDARD ROTOR



DR-01

- > High strength.
- > Superior heat dissipation.
- > Stainless steel.
- > Excellent disc wear.

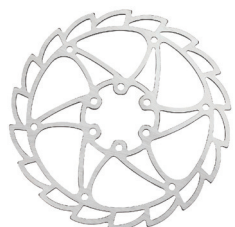
Size Option	Grams
160mm	137g
180mm	153g
203mm	200g



DR-02

- > High strength
- > Superior heat dissipation
- > Stainless steel
- > Excellent disc wear

Size Option	Grams
140mm	102g
160mm	142g
180mm	164g
203mm	188g



DR-03

- > High strength
- > Superior heat dissipation
- > Stainless steel
- > Excellent disc wear

Size Option	Grams
160mm	89g
180mm	119g



DR-04

- > High strength
- > Superior heat dissipation
- > Stainless steel
- > Excellent disc wear

Size Option	Grams
160mm	111g
180mm	150g
203mm	174g



DR-05

- > Double ground for superior flatness
- > Heat-treated to 42HRC
- > Excellent wet / dry performance
- > Excellent disc wear
- > Excellent heat dissipation
- > Dual color painting available

Size Option	Grams
160mm	98g
180mm	119g
203mm	145g



DR-07

- > Stainless solid rotor
- > Efficient heat dissipation pattern

Size Option	Grams
140mm	76g
160mm	91g
180mm	110g
203mm	173g

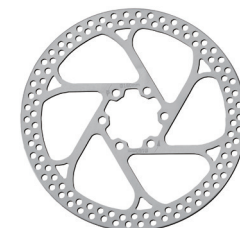
STANDARD ROTOR



DR-12

- > Stainless solid rotor
- > Efficient heat dissipation pattern

Size Option	Grams
254mm	311g

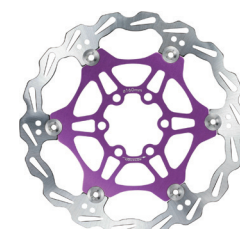


DR-15

- > Roundforce rotor
- > 100% round outline
- > Chamfered edge for safer cycling

Size Option	Grams
140mm	97g
160mm	111g
180mm	135g
203mm	166g

SPORT ROTOR

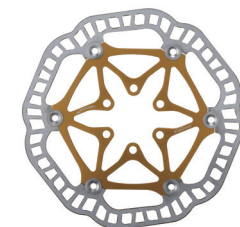


FR-06SA

- > Stainless braking band
- > 7075 alloy carrier

> BK R B GD G

Size Option	Grams
160mm	103g
180mm	141g
203mm	195g

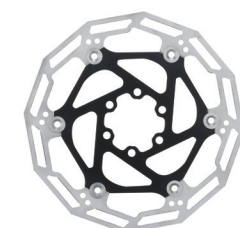


FR-07SA

- > Stainless braking band
- > 7075 alloy carrier
- > Stainless carrier version is available

> BK R B GD G

Size Option	Grams
160mm	105g
180mm	136g



FR-08SA

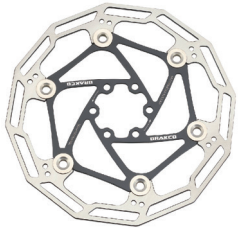
- > Stainless braking band
- > 7075 alloy carrier
- > Efficient heat dissipation pattern

> BK R B GD G

Size Option	Grams
160mm	93g
180mm	129g
203mm	176g



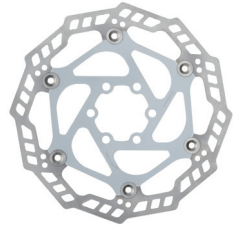
SPORT ROTOR



FR-08SS

- > Stainless braking band
- > Stainless carrier
- > Heat dissipation pattern design
- > BK R B GD G

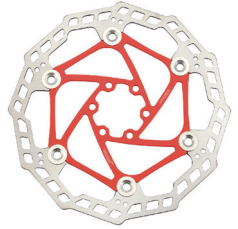
Size Option	Grams
160mm	118g
180mm	145g
203mm	180g



FR-09SA

- > Stainless braking band
- > 7075 alloy carrier
- > Efficient heat dissipation pattern
- > BK R B GD G

Size Option	Grams
160mm	101g
180mm	133g
203mm	183g



FR-09SS

- > Stainless braking band
- > Stainless carrier
- > Efficient heat dissipation pattern
- > BK R WT

Size Option	Grams
160mm	140g
180mm	150g
203mm	187g



FR-10SA

- > Stainless braking band
- > 7075 alloy carrier
- > Efficient heat dissipation pattern
- > BK R B GD G

Size Option	Grams
140mm	86g
160mm	108g
180mm	131g
203mm	172g



FR-11SA

- > SUS-410 braking band
- > 7075 alloy carrier
- > BK R B GD G

Size Option	Grams
140mm	96g
160mm	122g
180mm	149g
203mm	201g



FR-01SA

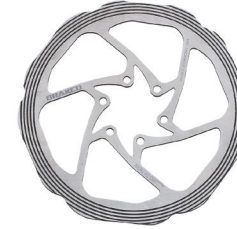
- > Wear-out indicator
- > Chamfered edge for safety reason
- > 7075 alloy carrier
- > SUS-410 braking band
- > BK R B GD G

Size Option	Grams
140mm	109g
160mm	133g
180mm	153g
203mm	191g

PRO ROTOR

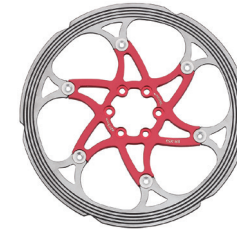
Precision CNC machined braking band improves the braking performance and dissipates heat more efficiently

- > Improving braking power in wet condition
- > Lowering the temperature in dry condition



DR-07-PRO

Size Option	Grams
160mm	127g
180mm	150g
203mm	200g



FR-10SA-PRO

- > BK R B GD G

Size Option	Grams
160mm	124g
180mm	155g
203mm	186g

ADAPTOR



Precision 100% CNC machined
colorful color: total 7 colors



Total 7 colors



POSTMOUNT CALIPER to POSTMOUNT FORK/FRAME

POSTMOUNT FORK/FRAME	SIZE OF ROTOR			
	140mm	160mm	180mm	203mm
POSTMOUNT fork/ frame for 140mm	—	 AP-07	—	—
POSTMOUNT fork/ frame for 160mm	—	—	 AP-07	 AP-08
			 AP-09	
POSTMOUNT fork/ frame for 180mm	—	—	—	 AP-19

POSTMOUNT CALIPER to INTERNATIONAL STANDARD FORK/FRAME

INTERNATIONAL STANDARD FORK/FRAME	SIZE OF ROTOR			
	140mm	160mm	180mm	203mm
IS fork	—	 AP-01	 AP-03	 AP-05
IS frame	—	 AP-02	 AP-04	 AP-06



POSTMOUNT CALIPER to FLATMOUNT FORK/FRAME

FLATMOUNT FORK/FRAME	SIZE OF ROTOR			
	140mm	160mm	180mm	203mm
FLATMOUNT fork	 AP-13	 AP-14	 AP-25	—
FLATMOUNT frame	 AP-16	 AP-15	 AP-21	—


FLATMOUNT CALIPER to FLATMOUNT FORK/FRAME

FLATMOUNT FORK/FRAME	SIZE OF ROTOR			
	140mm	160mm	180mm	203mm
FLATMOUNT fork	 AP-17	 AP-17	 AP-24	—
FLATMOUNT frame	—	 AP-18	 AP-22	—

INTERNATIONAL STANDARD CALIPER to INTERNATIONAL STANDARD FORK/FRAME

INTERNATIONAL STANDARD FORK/FRAME	SIZE OF ROTOR			
	140mm	160mm	180mm	203mm
160mm	—	—	 AP-10	 AP-11

INTERNATIONAL STANDARD CALIPER to POSTMOUNT FORK/FRAME

INTERNATIONAL STANDARD FORK/FRAME	SIZE OF ROTOR			
	140mm	160mm	180mm	203mm
180mm	—	—	 AP-12	—

ADAPTER FOR CENTERLOCK

CL-01 CENTERLOCK TYPE HUB	CL-AP-01 ROTOR ADAPTER	CL-WS-01 CENTERLOCK WASHER	CL-LR-01 LOCKING RING
			
CL-02 CENTERLOCK TYPE HUB FOR 20MM AXLE USE			
			

DISC PAD



All weather compound

0.5 μ

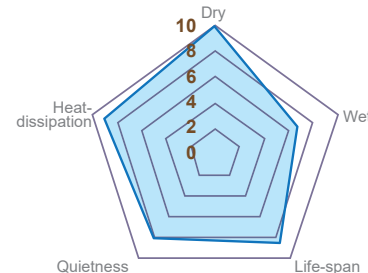
High friction coefficient



Kevlar® to reinforce the braking power



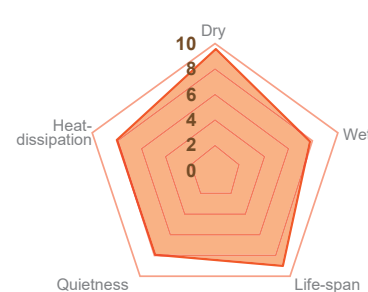
Organic compound



Standard compound for daily use and good performance in dry condition.



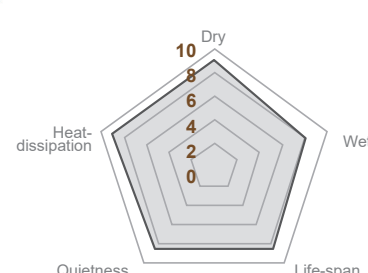
E-bike compound



Smooth braking for E-bike and heavy loaded bike. 30% longer life-span.



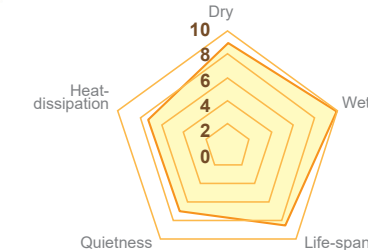
Tranquila compound



By absorbing the vibration, the soft tranquila compound significantly reduces the noise.



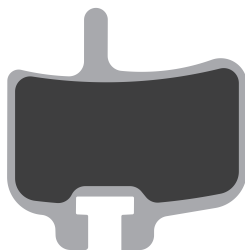
Sintered compound



The metal sintered compound brings rider extra braking power and life-span in wet condition.



HAYES HFX-MAG AND HFX 9-SERIES,
PROMAX HYDRAULIC



- BP-01
-
-
- BP-01S
-

DIATECH TWINCAM



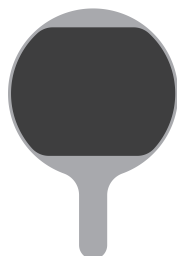
- BP-02
-
-
-
-

CANNONDALE CODA CALIPER



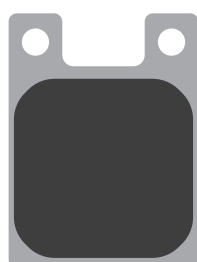
- BP-03
-
-
- BP-03S
-

MAGURA LOUISE 1999-2001,
CLARA2000, PROMAX DC910



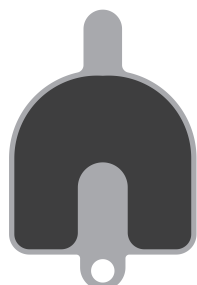
- BP-04
-
-
- BP-04S
-

HOPE C2, 02, GIANT MPH200



- BP-05 & HBP-51
-
-
- BP-05S & HBP-51
-

RST MECHANICAL



- BP-06
-
-
-
-

FORMULA HYDRAULIC CALIPER



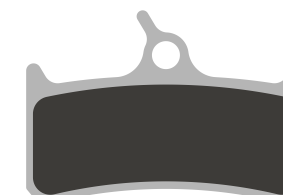
- BP-07
-
-
-
-

TEKTRO IO HYDRAULIC, MECHANICAL



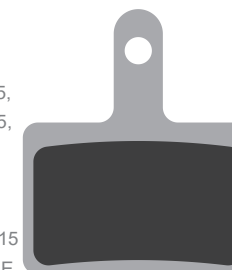
- BP-08
-
-
- BP-08S
-

SHIMANO DEORE XT BR-M755,
GRIMECA SYSTEM 8, SRAM 9.0, HOPE
MONO M4, PROMAX LUCID P4



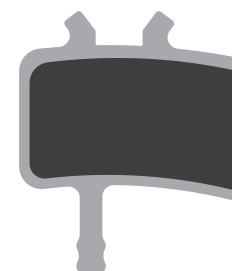
- BP-09 & SP-09
- BP-09E & SP-09
- BP-09T & SP-09
- BP-09S & SP-09
-

• SHIMANO BR-M575, M495, M486, M485, M475,
M465, M447, M446, M445, M416, M416A, M415,
M395, M375, M365, M355, M315, NEXAVE
BR-C601, C501, ALIVIO BR-M4050, ACERA
BR-M3050, TOURNEY BR-TX805, DEORE
BR-M525, M515, M515LA, LX BR-T675, BR-T615
• PROMAX DSK-909, SOLVE, LUCID, E-CAPSULE,
F1, GIANT ROOT
• TEKTRO ORION 4Px2P, SL, ORION, GIMINI SL, AURIGA, E-COMP, SUB, E-SUB, TUNE, E-TUNE, TWIN,
E-TWIN, VOLANS, VELA, DORADO, DRACO, AQUILA, ARIES, MIRA, HDC, PARABOX R, HYLEX, SPYRE,
SLC, HY, RD, SLATE X2, DASH SPORT, RST D-POWER, QDH-01, CLARKS S2



- BP-10 & SP-10
- BP-10E & SP-10
- BP-10T & SP-10
- BP-10S & SP-10
- BP-10PRO & SP-10

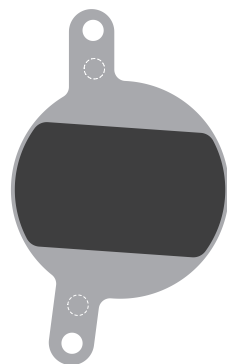
AVID JUICY BB7, JUICY ULTIMATE,
PROMAX DSK-950



- BP-11 & SP-11
-
-
- BP-11S & SP-11
- BP-11PRO & SP-11

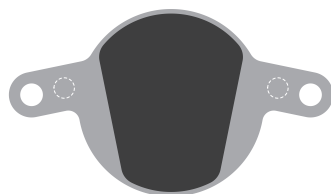


MAGURA JULIE CALIPER 2001-2008



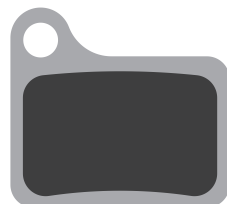
- BP-12 & HBP-50
- E-BIKE
- TRANSLUCIDA
- SINTERED
- SWISS
- BP-12S & HBP-50

MAGURA CLARA 2001~2002
LOUISE 2002~2006, LOUISE FR



- BP-14
- E-BIKE
- TRANSLUCIDA
- SINTERED
- SWISS
- BP-14S

SHIMANO DEORE, NAXAVE, BR-M555,
C901 HYDRAULIC



- BP-15 & SP-15
- E-BIKE
- TRANSLUCIDA
- SINTERED
- SWISS
- BP-15S & SP-15

FORMULA 4 RACING XC, FR, PRO,
SL, EXTREME, FR, DH, B4 TEAM,
GRIMECA 13



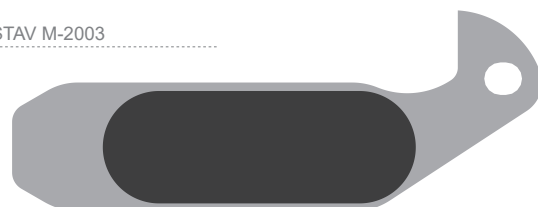
- BP-16 & SP-16
- E-BIKE
- TRANSLUCIDA
- SINTERED
- SWISS
- BP-16S & SP-16

SHIMANO BR-T605, M545, R505,
ALFINE BR-S501, S500, XTR BR-M975,
M966, M965, SAINT BR-M800,
HONE BR-M601, DEORE XT BR-M776,
M775, M765, LX BR-T665, M585,
BR-M596, M595, M535, SLX BR-M665



- BP-17 & SP-17
- E-BIKE
- TRANSLUCIDA
- SINTERED
- SWISS
- BP-17E & SP-17
- BP-17T & SP-17
- BP-17S & SP-17
- BP-17PRO & SP-17

MAGURA GUSTAV M-2003



- BP-18 & SP-18
- E-BIKE
- TRANSLUCIDA
- SINTERED
- SWISS

MAGURA MARTA, MARTA SL, TILL 2008



- BP-19
- E-BIKE
- TRANSLUCIDA
- SINTERED
- SWISS
- BP-19S
- BP-19PRO

HOPE MINI



- BP-20 & SP-20
- E-BIKE
- TRANSLUCIDA
- SINTERED
- SWISS
- BP-20S & SP-20

GIANT MPH2001~2003, MPH-1,
MPH 2001, MPH-3 2002



- BP-21
- E-BIKE
- TRANSLUCIDA
- SINTERED
- SWISS

HOPE 2002 M4 AND DH4



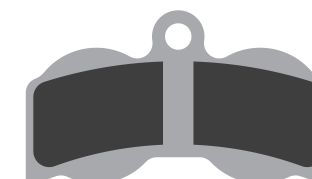
- BP-22 & SP-22
- E-BIKE
- TRANSLUCIDA
- SINTERED
- SWISS
- BP-22S & SP-22

ZOOM



- BP-23
- E-BIKE
- TRANSLUCIDA
- SINTERED
- SWISS

HOPE XC 4-PISTON



- BP-24 & SP-24
- E-BIKE
- TRANSLUCIDA
- SINTERED
- SWISS

LOGAN



- BP-25
- E-BIKE
- TRANSLUCIDA
- SINTERED
- SWISS

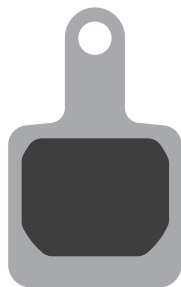


HAYES SOLE HYDRAULIC, MX2, MX3, MX4, GX AND SOLE MECHANICAL



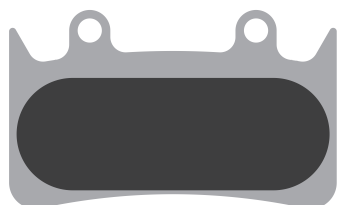
- BP-26
-
-
- BP-26S
-

SUNTOUR DB XCC-MC



- BP-27 & SP-27
-
-
- BP-27S & SP-27
-

HOPE 2004 MONO 6-TI, 2007 MONO 6, MOTO 6



- BP-28 & SP-28
-
-
- BP-28S & SP-28
-

HOPE 2004 MONO MINI, 2007 MONO MINI



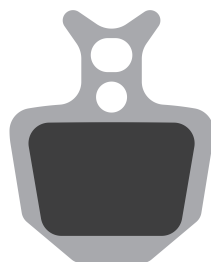
- BP-29 & SP-29
-
-
- BP-29S & SP-29
-

PROMAX DSK-400 601J & XNINE



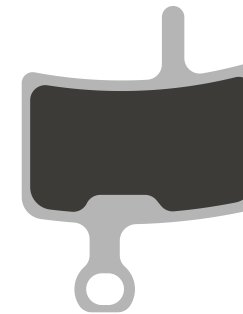
- BP-30
-
-
-
-

FORMULA ORO



- BP-31 & SP-31
-
-
- BP-31S & SP-31
- BP-31PRO & SP-31

DIATECH ANCHOR



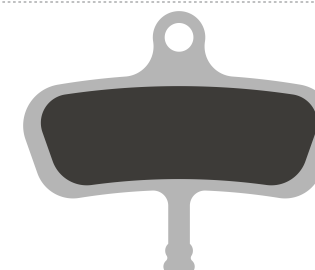
- BP-32
-
-
-
-

ASSESS MECHANICAL



- BP-33
-
-
-
-

AVID CODE, CODE5



- BP-34 & SP-34
-
-
- BP-34S & SP-34
-

HOPE 2010 V2



- BP-35 & SP-35
-
-
- BP-35S & SP-35
-

MAGURA LOUISE 2007, LOUISE BAT, LOUISE CARBON 2008, JULIE HP2009, MARTA 2009



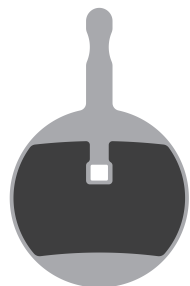
- BP-36
-
-
- BP-36S
-

HAYES EL CAMINO



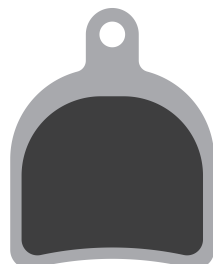
- BP-37
-
-
- BP-37S
-

AVID BB5, BB3 MECHANICAL,
PROMAX DSK-710



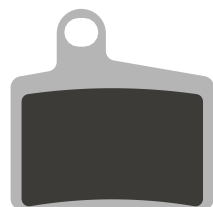
- BP-38 & SP-38
- BP-38S & SP-38
- BP-38PRO & SP-38

HOPE MONO TRIAL, 2012 TRIAL ZONE



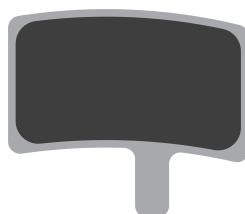
- BP-39
- BP-39S
- BP-39PRO

HAYES STROKER RYDE, DYN0



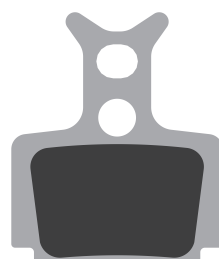
- BP-40 & SP-40
- BP-40S & SP-40
- BP-40PRO

HAYES STROKER TRIAL



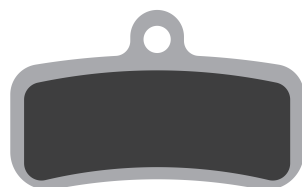
- BP-41
- BP-41S
- BP-41PRO

FORMULA MEGA ONE, R1, RX, RO



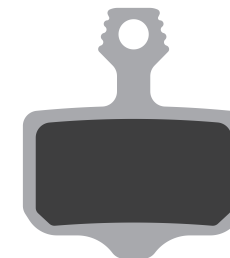
- BP-42 & SP-42
- BP-42E & SP-42
- BP-42T & SP-42
- BP-42S & SP-42
- BP-42PRO & SP-42

SHIMANO SAINT 2008 M810,
ZEE BR-M640, BR-M820, TRP QUADIEM



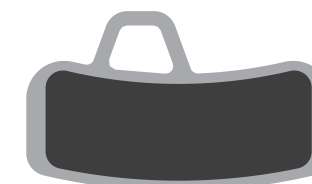
- BP-43 & SP-43
- BP-43E & SP-43
- BP-43T & SP-43
- BP-43S & SP-43
- BP-43PRO

AVID DB, AVID ELIXIR, SRAM XX,
XX WORLD CUP, SRAM XO SERIES



- BP-44 & SP-44
- BP-44E & SP-44
- BP-44T & SP-44
- BP-44S & SP-44
- BP-44PRO & SP-44

HAYES STROKER ACE



- BP-45
- BP-45S
- BP-45PRO

TEKTRO IOX



- BP-46
- BP-46S
- BP-46PRO

JOYTECH



- BP-47
- BP-47S
- BP-47PRO

HOPE TECH X2, MINI X2,
TECH V2, 2009 X2



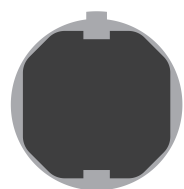
- BP-48 & SP-48
- BP-48S & SP-48
- BP-48PRO

HAYES PRIME, PRO, EXPERT,
COMP, SPORT



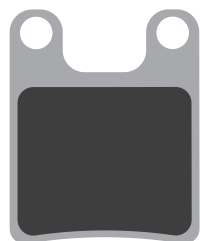
- BP-49 & SP-49
- BP-49S & SP-49
- BP-49PRO

FORMULA ACTIVA,
MD1 MECHANICAL CALIPER



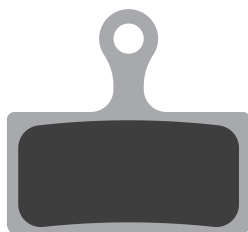
- BP-50
-
-
-
-

GIANT MPH1 CALIPER



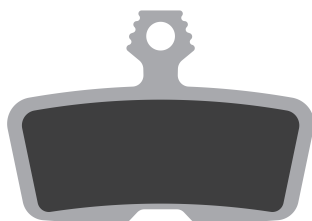
- BP-51 & HBP-50
-
-
-
-

SHIMANO BR-CX77, RS-785, R785,
R517, R317, XTR BR-M9000, M9020,
M987, M985, DEORE BR-M615,
XT BR-M8000, M785, SLX BR-M7000,
M675, M666, ALFINE BR-S700



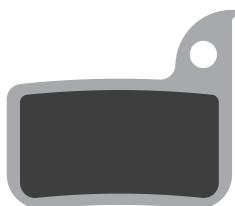
- BP-52 & SP-52
- BP-52E & SP-52
- BP-52T & SP-52
- BP-52S & SP-52
-

AVID CODE 2011+, GUIDE RE,
CODE R, CODE RSC 2018



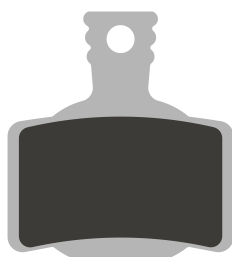
- BP-53 & SP-53
- BP-53E & SP-53
- BP-53T & SP-53
- BP-53S & SP-53
-

SRAM RED 22 B1, FORCE 22, FORCE 1,
CX1, RIVAL 22, RIVAL 1, 700 B1 HRD, HRR



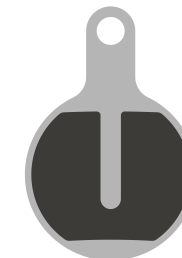
- BP-54 & SP-54
-
-
- BP-54S & SP-54
-

MAGURA MT2, 4, 6, 8



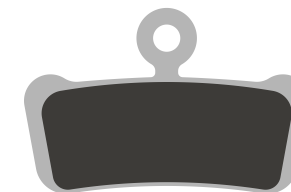
- BP-55
- BP-55E
- BP-55T
- BP-55S
-

TEKTRO LYRA



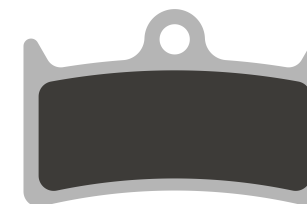
- BP-56 & SP-56
-
-
- BP-56S & SP-56
-

AVID XO TRAIL, SRAM GUIDE ULTIMATE,
RSC, R, RS



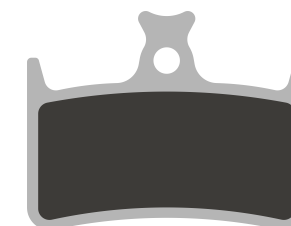
- BP-57 & SP-57
- BP-57E & SP-57
- BP-57T & SP-57
- BP-57S & SP-57
-

HOPE 2007 MONO M4,
2013 2014 MONO V4



- BP-58 & SP-58
- BP-58E & SP-58
- BP-58T & SP-58
- BP-58S & SP-58
-

HOPE 2014 E4



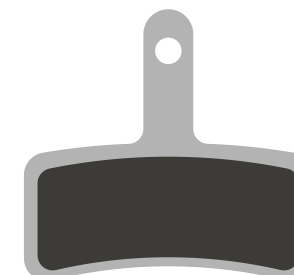
- BP-59 & SP-59
- BP-59E & SP-59
- BP-59T & SP-59
- BP-59S & SP-59
-

MAGURA MT5, 7



- BP-60
- BP-60E
- BP-60T
- BP-60S
-

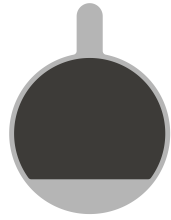
TEKTRO DORADO



- BP-61 & SP-61
- BP-61E & SP-61
-
- BP-61S & SP-61
-

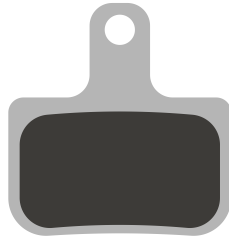
DISC BRAKE PADS

CLARKS CMB-8.....
CMD-11.MECHANICAL.CMD-16.....



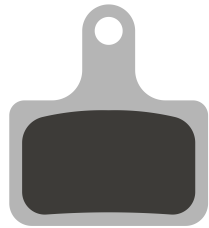
- BP-62
-
-
-
-

SRAM DB.....



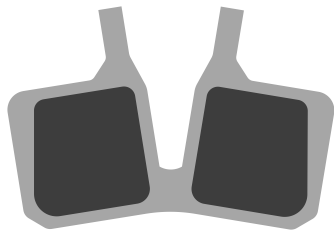
- BP-63 & SP-63
- BP-63E & SP-63
-
- BP-63S & SP-63
-

SHIMANO ULTEGRA BR-RS805,RS505.....
RS-405,RS-305.DURA-ACE BR-R9170.....
METREA BR-U5000.....



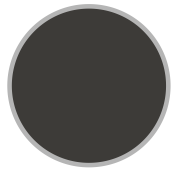
- BP-64 & SP-64
- BP-64E & SP-64
- BP-64T & SP-64
- BP-64S & SP-64
-

MAGURA MT5,MT7.....



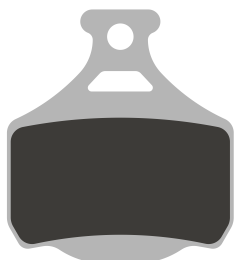
- BP-65
- BP-65E
-
- BP-65S
-

CLARKS CMD5, CMD7, CMD12.....



- BP-66
-
-
-
-

CAMPAGNOLO CALIPER.....



- BP-67
-
-
-
-

BPX SERIES



**STRONG LIGHT CARBON
STEEL BACKPLATE.**

 BPX-10 ..Fits SHIMANO DEORE.....	 BPX-17 ..Fits SHIMANO XTR BEFORE 2011.....	 BPX-42 ..Fits FORMULA MEGA ONE.....
---	---	--

 BPX-44 ..Fits AVID ELIXIR.....	 BPX-52 ..Fits SHIMANO XTR 2011.....	 BPX-55 ..Fits MAGURA MT2, 4, 6, 8.....
---	--	---



BPF-09

- > Fits SHIMANO DEORE XT BR-M755 / GRIMECA SYSTEM 8 / SRAM9.0 / HOPE MOMO M4
- > Replacement pads: BPFR-09 (ORGANIC)
- > Replacement pads: BPFR-09S (SINTERED)



BPF-10

- > Fits SHIMANO BR-M355 / M395 / M4050 / M445 / M446 / M447 / M486 / T615 / T675
- > Replacement pads: BPFR-10 (ORGANIC)
- > Replacement pads: BPFR-10S (SINTERED)



BPF-17

- > Fits SHIMANO XTR BEFORE 2011
- > Replacement pads: BPFR-17 (ORGANIC)
- > Replacement pads: BPFR-17S (SINTERED)



BPF-42

- > Fits FORMULA MEGA ONE
- > Replacement pads: BPFR-42 (ORGANIC)
- > Replacement pads: BPFR-42S (SINTERED)



BPF-43

- > Fits SHIMANO SAINT
- > Replacement pads: BPFR-43 (ORGANIC)
- > Replacement pads: BPFR-43S (SINTERED)



BPF-44

- > Fits AVID ELIXIR
- > Replacement pads: BPFR-44 (ORGANIC)
- > Replacement pads: BPFR-44S (SINTERED)



BPF-52

- > Fits SHIMANO XTR
- > Replacement pads: BPFR-52 (ORGANIC)
- > Replacement pads: BPFR-52S (SINTERED)



BPF-53

- > Fits AVID CODE 2011
- > Replacement pads: BPFR-53 (ORGANIC)
- > Replacement pads: BPFR-53S (SINTERED)



BPF-55

- > Fits MAGURA MT2, 4, 6, 8
- > Replacement pads: BPFR-55 (ORGANIC)
- > Replacement pads: BPFR-55S (SINTERED)



BPF-57

- > Fits AVID XO TRAIL
- > Replacement pads: BPFR-57 (ORGANIC)
- > Replacement pads: BPFR-57S (SINTERED)



BPF-58

- > Fits HOPE V4
- > Replacement pads: BPFR-58 (ORGANIC)
- > Replacement pads: BPFR-58S (SINTERED)



BPF-59

- > Fits HOPE E4
- > Replacement pads: BPFR-59 (ORGANIC)
- > Replacement pads: BPFR-59S (SINTERED)





BPF-64

- > Fits SHIMANO ULTEGRA BR-RS805 / BR-RS505
- > Replacement pads: BPFR-64 (ORGANIC)
- > Replacement pads: BPFR-64S (SINTERED)

HOSE



















Shift inner wire

DI-S-TSC			> Teflon coated sleek treatment 2100mm, SHIMANO system	50pcs/box 1pc/zipper bag
DI-C-TSC			> Teflon coated sleek treatment 2100mm, CAMPAGNOLO system	
DI-S-SS			> Stainless steel sleek treatment 2100mm, SHIMANO system	50pcs/box 1pc/zipper bag
DI-C-SS			> Stainless steel sleek treatment 2100mm, CAMPAGNOLO system	
DI-S-SG			> Galvanized steel sleek treatment 2100mm, SHIMANO system	50pcs/box 1pc/zipper bag
DI-C-SG			> Galvanized steel sleek treatment 2100mm, CAMPAGNOLO system	
DI-S-SL			> Stainless steel standard finish 2100mm, SHIMANO system	50pcs/box 1pc/zipper bag
DI-C-SL			> Stainless steel standard finish 2100mm, CAMPAGNOLO system	
DI-S-GA			> Galvanized steel standard finish 2100mm, SHIMANO system	50pcs/box 1pc/zipper bag
DI-C-GA			> Galvanized steel standard finish 2100mm, CAMPAGNOLO system	

Brake inner wire

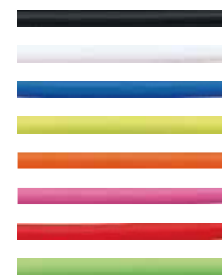
BI-S-TSC			> Teflon coated sleek treatment 1700mm, Road for SHIMANO system	
BI-M-TSC			> Teflon coated sleek treatment 1700mm, MTB system	50pcs/box 1pc/zipper bag
BI-C-TSC			> Teflon coated sleek treatment 1700mm, Road for CAMPAGNOLO system	
BI-S-SS			> Stainless steel sleek treatment 1700mm, Road for SHIMANO system	
BI-M-SS			> Stainless steel sleek treatment 1700mm, MTB system	50pcs/box 1pc/zipper bag
BI-C-SS			> Stainless steel sleek treatment 1700mm, Road for CAMPAGNOLO system	
BI-S-SG			> Galvanized steel sleek treatment 1700mm, Road for SHIMANO system	
BI-M-SG			> Galvanized steel sleek treatment 1700mm, MTB system	> 50pcs/box > 1pc/zipper bag
BI-C-SG			> Galvanized steel sleek treatment 1700mm, Road for CAMPAGNOLO system	
BI-S-SL			> Stainless steel standard finish 1700mm, Road for SHIMANO system	
BI-M-SL			> Stainless steel standard finish 1700mm, MTB system	50pcs/box 1pc/zipper bag
BI-C-SL			> Stainless steel standard finish 1700mm, Road for CAMPAGNOLO system	
BI-S-GA			> Galvanized steel standard finish 1700mm, Road for SHIMANO system	
BI-M-GA			> Galvanized steel standard finish 1700mm, MTB system	50pcs/box 1pc/zipper bag
BI-C-GA			> Galvanized steel standard finish 1700mm, Road for CAMPAGNOLO system	

Shift housing

DH-ST-SD		> Standard SP linear shift housing > Length: 2.2 / 30 / 50 meter	
DH-ST-YN		> Yarn braided SP linear shift housing > Length: 2.2 / 30 / 50 meter	
DH-ST-LA		> Shiny gold/silver SP linear shift housing > Length: 2.2 / 30 / 50 meter	
DH-AL-SD		> Alloy with steel linear SP shift housing, double Kevlar® reinforced, pre-greased, 35% lighter than standard SP > Length: 2.2 / 30 / 50 meter	
BH-ST-SD		> Regular 2P coiled brake housing > Length: 2.5 / 30 / 50 meter	
BH-ST-YN		> Yarn braided 2P linear brake housing > Length: 2.5 / 30 / 50 meter	
BH-ST-LA		> Shiny gold/silver 2P linear brake housing > Length: 2.5 / 30 / 50 meter	
BH-AL-SD		> Alloy with steel linear SP brake housing, double Kevlar® reinforced, pre-greased, 50% lighter than standard 2P > Length: 2.5 / 30 / 50 meter	

Hydraulic hose

The PVDF extruded inner tube has a tough, smooth, wax-like texture which resists erosion and offers excellent chemical resistance. Braided Kevlar® used as the reinforcement material in BRAKCO hose that is capable of handling hydraulic pressure up to 6000psi.



HH-01

> 4 layers standard hydraulic hose
> Inner diameter: 2.1 / 2.3 / 2.5 mm
> Length: 3 / 30 / 50 meter

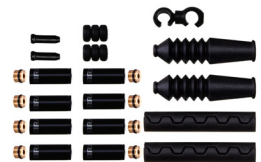
HH-02

> 5 layers yarn hydraulic hose
Double reinforced by Kevlar® and yarn. Brilliant yarn texture looks for cosmetic purpose
> Inner diameter: 2.1 / 2.3 / 2.5 mm
> Length: 3 / 30 / 50 meter

HH-03

> 5 layers stainless steel hydraulic hose
Stainless steel wire braid is stronger than other hydraulic hose in the wear resistance.
> Inner diameter: 2.1 / 2.3 / 2.5 mm
> Length: 3 / 30 / 50 meter

Housing & Inner wire set

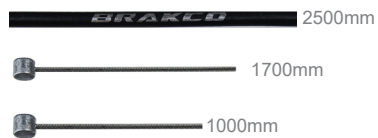


HBS-R-01

- > BH-AL-SD, 2500mm extra light and Kevlar® reinforced SP linear, lubricated brake housing.
- > BI-SC-SS, 1.5×1000mm and 1.5×1700mm stainless steel, sleek treatment inner wire.
- > Double heads for SHIMANO / CAMPAGNOLO system.
- > Brake parts:
MBP-01×1pc, MBP-08×2pcs, MBP-23×2pcs, MBP-42×8pcs, MBP-46×2pcs, MBP-49×2pcs

HBS-R-02

- > BH-ST-SD, 2500mm standard 2P coiled brake housing.
- > BI-SC-SL, 1.5×1000mm and 1.5×1700mm stainless steel, standard finish inner wire.
- > Double heads for SHIMANO / CAMPAGNOLO system.
- > Brake parts:
MBP-01×1pc, MBP-08×2pcs, MBP-23×2pcs, MBP-42×8pcs, MBP-46×2pcs, MBP-49×2pcs



HBS-M-01

- > BH-AL-SD, 2500mm extra light and Kevlar® reinforced SP linear, lubricated brake housing.
- > BI-M-SS, 1.5×1000mm and 1.5×1700mm stainless steel, sleek treatment inner wire.
- > Brake parts:
MBP-01×1pc, MBP-08×2pcs, MBP-23×2pcs, MBP-42×8pcs, MBP-46×2pcs, MBP-49×2pcs

HBS-M-02

- > BH-ST-SD, 2500mm standard 2P coiled brake housing.
- > BI-M-SL, 1.5×1000mm and 1.5×1700mm stainless steel, standard finish inner wire.
- > Brake parts:
MBP-01×1pc, MBP-08×2pcs, MBP-23×2pcs, MBP-42×8pcs, MBP-46×2pcs, MBP-49×2pcs



HDS-U-01

- > DH-AL-SD, 2200mm extra light and Kevlar® reinforced SP linear, lubricated shift housing.
- > DI-SC-SS, 1.1×2100mm ×2pcs, stainless steel, sleek treatment inner wire.
- > Double heads for SHIMANO / CAMPAGNOLO system.
- > Shift parts:
MBP-01×1pc, MBP-22×2pcs, MBP-43×10pcs, MBP-47×2pcs, MBP-50×2pcs

HDS-U-02

- > DH-ST-SD, 2200mm standard SP linear shift housing.
- > DI-SC-SL, 1.2×2100mm ×2pcs stainless steel, standard finish inner wire.
- > Double heads for SHIMANO / CAMPAGNOLO system.
- > Shift parts:
MBP-01×1pc, MBP-22×2pcs, MBP-43×10pcs, MBP-47×2pcs, MBP-50×2pcs

Hydraulic Brake Parts

ROTOR SHIELD

Protecting riders from disc rotor slicing and burning. Stronger material, light weight.

The disc Rotor Shields are designed to keep riders from being burned and sliced by red hot steel rotor and sharp rotor edge.

Especially for heavy loaded **E-BIKE**, the rotor would reach 300 Celsius degree in seconds when braking.

Keep riders from being burned and cut

Especially for heavy loaded E-BIKE

The rotor will reach 300 Celsius degree in a few seconds while braking.

Compatibility:

- FM fork for 140/160mm.
- PM fork for 160/180mm.
- IS fork 160/180mm.

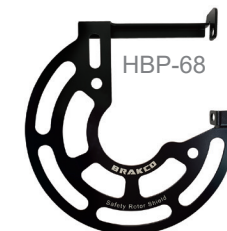
Material: Strong light alloy



HBP-61



HBP-62



HBP-68

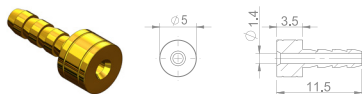


HBP-69

Needles and olivers

needle:

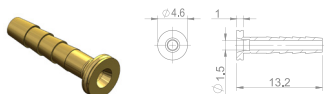
HBP-06



> Needle for I.D. 2.1mm hose fits AVID
> Copper

100pcs/bottle
8pcs/zipper bag

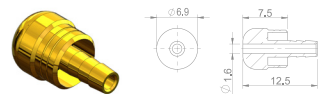
HBP-07



> Needle for I.D. 2.3mm hose fits SHIMANO BH-59
> Copper

100pcs/bottle
8pcs/zipper bag

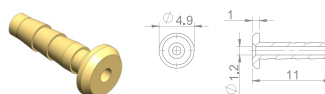
HBP-08



> Needle for I.D. 2.5mm hose fits HAYES
> Copper

100pcs/bottle
8pcs/zipper bag

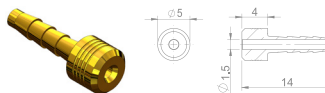
HBP-17



> Needle for I.D. 2.1mm hose fits FORMULA
> Copper

100pcs/bottle
8pcs/zipper bag

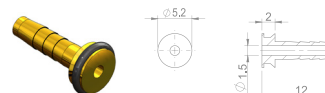
HBP-18



> Needle for I.D. 2.2mm hose fits MAGURA
> Copper

100pcs/bottle
8pcs/zipper bag

HBP-67



> Needle for I.D. 2.5mm hose fits TEKTRO
> Copper with o-ring

100pcs/bottle
8pcs/zipper bag

HBP-72



> Threaded needle for I.D. 2.1mm hose fits SRAM
> SUS 303 stainless steel

100pcs/bottle
8pcs/zipper bag

HBP-75

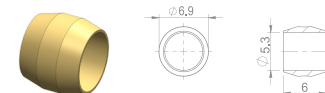


> Needle for I.D. 2.1mm hose fits SHIMANO BH-90
> Stainless steel

100pcs/bottle
8pcs/zipper bag

oliver:

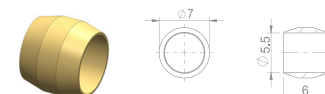
HBP-09



> Oliver for O.D. 5mm hose fits SHIMANO
> Copper

100pcs/bottle
8pcs/zipper bag

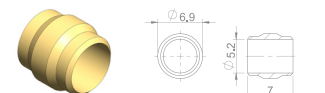
HBP-10



> Oliver for O.D. 5.5mm hose fits HAYES
> Copper

100pcs/bottle
8pcs/zipper bag

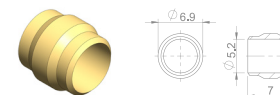
HBP-14



> Oliver for O.D. 5mm hose fits AVID
> Copper

100pcs/bottle
8pcs/zipper bag

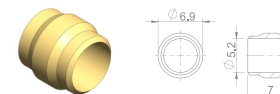
HBP-15



> Oliver for O.D. 5mm hose fits FORMULA
> Copper

100pcs/bottle
8pcs/zipper bag

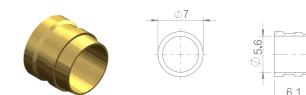
HBP-16



> Oliver for O.D. 5mm hose fits MAGURA
> Copper

100pcs/bottle
8pcs/zipper bag

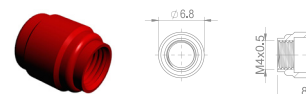
HBP-66



> Oliver for O.D. 5.5mm hose fits TEKTRO
> Copper

100pcs/bottle
8pcs/zipper bag

HBP-73

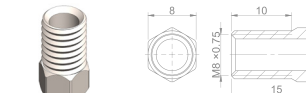


> Threaded oliver for O.D. 5mm hose fits SRAM
> 6061 alloy

100pcs/bottle
8pcs/zipper bag

Nuts

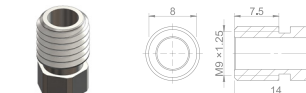
HBP-01



> M8 x 0.75 fits SHIMANO / AVID
> 6061 alloy
BK R B GD G

40pcs/bottle
8pcs/zipper bag

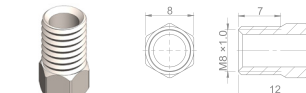
HBP-02



> M9 x 1.25 fits MAGURA MT2 / 4 / 6
> 6061 alloy
BK R B GD

40pcs/bottle
8pcs/zipper bag

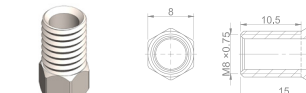
HBP-03



> M8 x 1 fits FORMULA R / R1 / MEGA
> 6061 alloy
BK R B GD

40pcs/bottle
8pcs/zipper bag

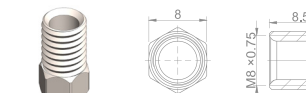
HBP-19



> M8 x 0.75 for O.D. 5mm hose fits AVID
> Stainless steel

40pcs/bottle
8pcs/zipper bag

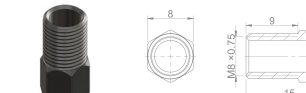
HBP-20



> M8 x 0.75 for O.D. 5mm hose fits SHIMANO
> Stainless steel

40pcs/bottle
8pcs/zipper bag

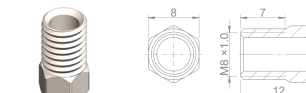
HBP-21



> M8 x 0.75 for O.D. 5.5mm hose fits HAYES
> Steel

40pcs/bottle
8pcs/zipper bag

HBP-22



> M8 x 1.0 for O.D. 5mm hose fits FORMULA, MEGA / THE ONE
> Stainless steel

40pcs/bottle
8pcs/zipper bag

HBP-23



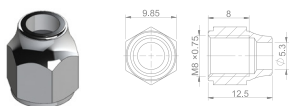
> M9 x 1.25 for O.D. 5mm hose fits MAGURA MT2 / 4 / 6
> Stainless steel

40pcs/bottle
8pcs/zipper bag

Banjo parts

nut:

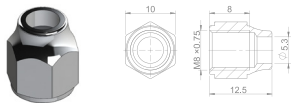
HBP-04



> M8 x Ø5 banjo nut fits SHIMANO / AVID
> 6061 alloy

20pcs/bottle
4pcs/zipper bag

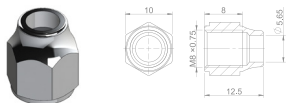
HBP-29



> Banjo nut for O.D 5mm hose fits AVID /
MAGURA / SHIMANO / FORMULA
> Stainless steel

20pcs/bottle
4pcs/zipper bag

HBP-30

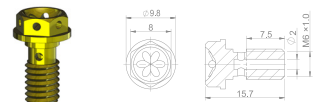


> Banjo nut for O.D 5.5mm hose fits HAYES
> Stainless steel

20pcs/bottle
4pcs/zipper bag

bolt:

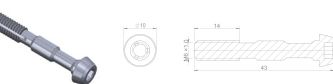
HBP-05



> M6 fits banjo bolt
> 7075 alloy

20pcs/bottle
4pcs/zipper bag

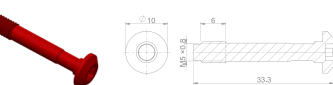
HBP-12



> Banjo bolt fits SHIMANO XTR 2012
> Steel

20pcs/bottle
2pcs/zipper bag

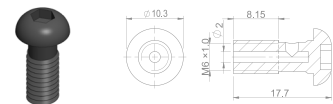
HBP-13



> Banjo bolt fits MAGURA MT2 / 4 / 6
> 6061 alloy

20pcs/bottle
2pcs/zipper bag

HBP-31

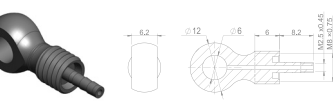


> M6 x 18 banjo bolt
> Steel

20pcs/bottle
4pcs/zipper bag

banjo:

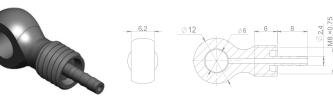
HBP-11



> Banjo for I.D. 2.3mm hose fits SHIMANO
> 7075 alloy
> use with HBP-33 o-ring only
> BK R 8 GD G

20pcs/bottle
4pcs/zipper bag

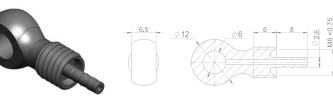
HBP-24



> Banjo for I.D. 2.1mm hose fits AVID
> Stainless steel
> use with HBP-33 o-ring only

20pcs/bottle
4pcs/zipper bag

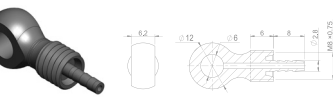
HBP-25



> Banjo for I.D. 2.3mm hose fits SHIMANO
> Stainless steel
> use with HBP-33 o-ring only

20pcs/bottle
4pcs/zipper bag

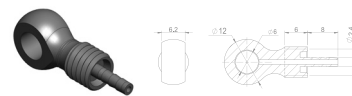
HBP-26



> Banjo for I.D. 2.5mm hose fits HAYES
> Stainless steel
> use with HBP-33 o-ring only

20pcs/bottle
4pcs/zipper bag

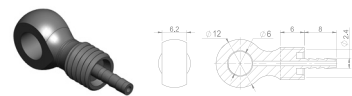
HBP-27



> Banjo for I.D. 2.1mm hose fits FORMULA
> Stainless steel
> use with HBP-33 o-ring only

20pcs/bottle
4pcs/zipper bag

HBP-28



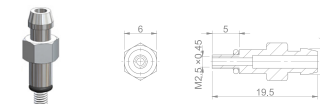
> Banjo for I.D. 2.2mm hose fits MAGURA
> Stainless steel
> use with HBP-33 o-ring only

20pcs/bottle
4pcs/zipper bag

Bleeding oil parts

adapter:

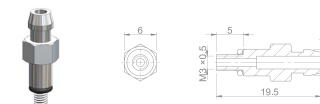
HBP-38



> M2.5 x 1 bleeding adapter with o-ring
fits HAYES EL CAMINO
> Cooper

10pcs/polybag
2pcs/zipper bag

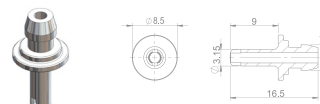
HBP-39



> M3 bleeding adapter with o-ring fits
HOPE X2, MONO MINI
> Cooper

10pcs/polybag
2pcs/zipper bag

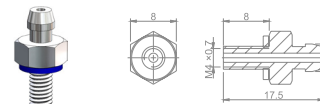
HBP-40



> Ø3 bleeding adapter fits FORMULA
> Stainless steel

10pcs/polybag
2pcs/zipper bag

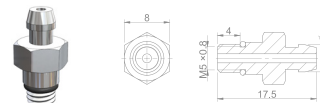
HBP-41



> M4 x 0.7 bleeding adapter
with o-ring fits MAGURA LOUISE
> Cooper

10pcs/polybag
2pcs/zipper bag

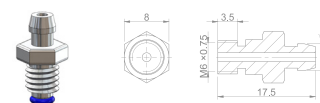
HBP-42



> M5 x 0.8 bleeding adapter with o-ring fits
HAYES / FORMULA / AVID / SHIMANO
> Cooper

10pcs/polybag
2pcs/zipper bag

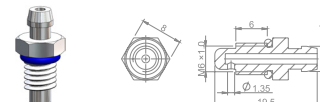
HBP-43



> M6 x 0.75 bleeding adapter
fits MAGURA MT4
> Stainless steel

10pcs/polybag
2pcs/zipper bag

HBP-44



> M6 x 1 bleeding adapter with o-ring fits
MAGURA / HAYES / SHIMANO / HOPE
> Cooper

10pcs/bottle
2pcs/zipper bag

other:

HBP-45



> Syringes 20cc
> Plastic

1pc/polybag

HBP-46



> M8 open wrench
> Steel

50pcs/polybag
2pcs/zipper bag

PRODUCT

IMAGE

DESCRIPTION

QUANTITY

HBP-47



> 10cm PU hose
> PU

50pcs/polybag
2pcs/zipper bag

HBP-48



> Clips
> Plastic

50pcs/polybag
2pcs/zipper bag

HBP-64



> NBR gloves

1pr/polybag
1pr/zipper bag

HBP-65

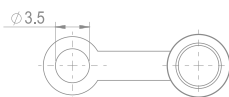


> 50cc empty bottle

50pcs/polybag

cap:

HBP-70



> SHIMANO bleeding nipple rubber cap
> NBR

100pcs/bottle
8pcs/zipper bag

oil:

HBP-57



> Mineral oil

1000cc/bottle
50cc/bottle

HBP-58



> DOT 4

1000cc/bottle
50cc/bottle

HBP-79



> DOT 5.1

1000cc/bottle
50cc/bottle

Caliper fixing parts

pin:

HBP-50



> 35mm fixing pin fits SHIMANO
DEORE / AVID ELIXIR 1 / 3
> Steel

10pcs/polybag
4pcs/zipper bag

HBP-51



> 45mm fixing pin fits HOPE
> Steel

10pcs/polybag
4pcs/zipper bag

HBP-60



> 50mm fixing pin fits HAYES
STROKER RYDE
> Steel

10pcs/polybag
4pcs/zipper bag

fixing bolt:

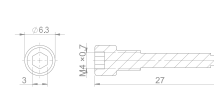
HBP-49



> M4 x 22.5 nylok socket set screw
fits MAGURA MARTA / GUSTAVA /
LOUISE 2007
> Steel

10pcs/polybag
4pcs/zipper bag

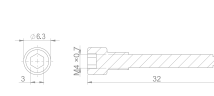
HBP-52



> M4 x 22 fixing bolt fits AVID ELIXIR
5 / 7 / 9, GUIDE, CODE / TRAIL
> Steel

10pcs/polybag
4pcs/zipper bag

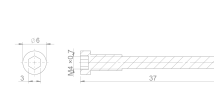
HBP-53



> M4 x 27 fixing bolt fits SHIMANO
XT / XTR, MAGURA MT 2 / 4 / 6,
TEKTRO, FORMULA ORO
> Steel

10pcs/polybag
4pcs/zipper bag

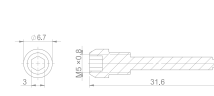
HBP-54



> M4 x 36 fixing bolt fits HAYES
RYDE / DYNO
> Steel

10pcs/polybag
4pcs/zipper bag

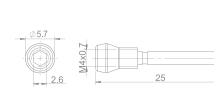
HBP-55



> M5 x 25 fixing bolt fits
FORMULA ORO FORMULA MEGA /
HOPE E4 / V4 / X2 / V2
> Steel

10pcs/polybag
4pcs/zipper bag

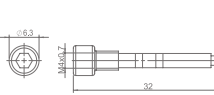
HBP-74



> M4 x 25 fixing bolt fits SRAM RED /
FORCE / RIVAL
> Steel

10pcs/polybag
4pcs/zipper bag

HBP-78

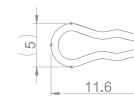


> M4 x 27 fixing bolt with indicator
mark fits MAGURA MT 2 / 4 / 6
> Steel

10pcs/polybag
4pcs/zipper bag

clip:

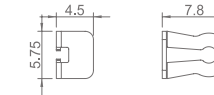
HBP-56



> Clip fits M4 / M5 fixing bolts
> Steel

10pcs/polybag
16pcs/zipper bag

HBP-77



> Clip fits M4 x 25 fixing bolts
> Steel
> use with HBP-74

10pcs/polybag
10pcs/zipper bag

Rotor shields

HBP-61



> Rotor shield fits flatmount fork:
140/160mm rotor
> 5052 alloy

1pc/polybag
1pc/card box

HBP-62



> Rotor shield fits flatmount frame:
140/160mm rotor
> 5052 alloy

1pc/polybag
1pc/card box

HBP-68



> Rotor shield fits postmount fork:
160/180mm rotor
> 5052 alloy

1pc/polybag
1pc/card box

HBP-69

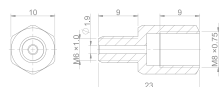


> Rotor shield fits IS frame:
160/180mm rotor
> 5052 alloy

1pc/polybag
1pc/card box

Other parts

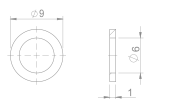
HBP-32



> M6 male
> Stainless steel

20pcs/bottle
4pcs/zipper bag

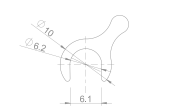
HBP-33



> 1mm o-ring
> Copper

400pcs/bottle
20pcs/zipper bag

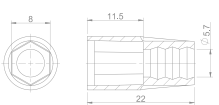
HBP-34



> 0.2mm shim
> Stainless steel

400pcs/bottle
20pcs/zipper bag

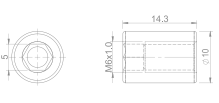
HBP-35



> Rubber shield
> Rubber

30pcs/bottle
10pcs/zipper bag

HBP-59



> M6 x 14.3 nut with washer fits
adapter bolt of PM-FM-R140 / SHIMANO
SM-MA-R140 P/D
> Steel

1set/polybag
1set/zipper bag

Tools

HBP-36



> Needle driver
> Steel and alloy

1pc/polybag

HBP-63



> Needle driver
> Steel and alloy

1pc/polybag

Rubber seal

HBP-82



> Rubber seal for banjo fits
SHIMANO BR-R785, XTR BR-M9000 /
BR-M9020, SLX BR-M7000,
DEORE XT BR-M8000 / BR-M8020,
ALFINE BR-S700

20pcs/zipper bag

HBP-83



> Rubber seal for bleeding nipple
fits SHIMANO DEORE, XT, XTR

20pcs/zipper bag

HBP-84



> Rubber seal for banjo fits
MAGURA MT 4 / 5 / 6 / 7 / 8,
TEKTRO ORION SL, ORION, GEMINI
SL, VOLANS, AURIGA TUNE, AURIGA
SUB, AURIGA TWIN, DORADO

20pcs/zipper bag

HBP-85



> Rubber seal for bleeding nipple
fits MAGURA MT 4

20pcs/zipper bag

HBP-86



> Rubber seal for banjo and banjo
bolts fits SRAM GUIDE
ULTIMATE, HYDROR FOR
FLATMOUNT, ELIXIR 5

20pcs/zipper bag

HBP-87



> Rubber seal for banjo fits
SRAM ELIXIR 9, 7, XO TRIAL, XX,
WORLD CUP, XX, XO, HYDROR
FOR POSTMOUNT

20pcs/zipper bag

HBP-88



> Rubber seal for bleeding screw
fits SRAM ELIXIR 9, 7, XO TRIAL,
XX, WORLD CUP, XX, XO, HYDROR
FOR POSTMOUNT, FORMULA R1,
THE ONE, MEGA

20pcs/zipper bag

HBP-89



> Rubber seal for bleeding nipple
fits FORMULA THE ONE,
SRAM ELIXIR 5

20pcs/zipper bag

HBP-90



> Rubber seal for bleeding screw
fits FORMULA RX

20pcs/zipper bag

HBP-91



> Rubber seal for banjo and straight
type fits HAYES PRIME, HFX-9,
HFX-MAG

20pcs/zipper bag



Mechanical Brake Parts



PRODUCT /

IMAGE /

DESCRIPTION /

QUANTITY

End caps

MBP-02



> Plastic nosed caps for brake
> BK

30pcs/bottle
8pcs/zipper bag

MBP-03



> Plastic nosed caps for shift
> BK

30pcs/bottle
8pcs/zipper bag

MBP-14



> Colored brass caps for brake
> Strong 0.3mm thickness
> BK R B GD G

200pcs/bottle
10pcs/zipper bag

MBP-15



> Colored brass caps for shift
> Strong 0.3mm thickness
> BK R B GD G

200pcs/bottle
10pcs/zipper bag

MBP-36



> Housing cap fits 5mm brake housing
> BK R B G SR GD

100pcs/bottle
10pcs/zipper bag

MBP-37



> Housing cap fits 4mm shift housing
> BK R B G SR GD

100pcs/bottle
10pcs/zipper bag

MBP-38



> Housing cap fits 5mm brake housing
> Copper pressed
> SR

200pcs/bottle
10pcs/zipper bag

MBP-39



> Housing cap fits 4mm shift housing
> Copper pressed
> SR

200pcs/bottle
10pcs/zipper bag

MBP-40



> Housing cap fits 5mm brake housing
> Plastic
> BK

100pcs/bottle
10pcs/zipper bag

MBP-41



> Housing cap fits 4mm shift housing
> Plastic
> BK

100pcs/bottle
10pcs/zipper bag

MBP-42



> Housing cap fits 5mm brake housing
> Sealed end caps
> BK R B G SR GD

100pcs/bottle
10pcs/zipper bag



MBP-43



> Housing cap fits 4mm shift housing
> Sealed end caps
> BK R B G SR GD



100pcs/bottle
10pcs/zipper bag

PRODUCT	IMAGE	DESCRIPTION	QUANTITY
---------	-------	-------------	----------



MBP-44		<ul style="list-style-type: none"> > Housing cap > Nosed caps fits 5mm brake housing > Alloy CNC machined > SR 	20pcs/bottle 8pcs/zipper bag
MBP-45		<ul style="list-style-type: none"> > Housing cap > Nosed caps fits 4mm shift housing > Alloy CNC machined > BK 	20pcs/bottle 8pcs/zipper bag

Protecting parts

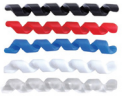


boot:

MBP-08		<ul style="list-style-type: none"> > Pipe boot > BK 	30pcs/bottle 8pcs/zipper bag
MBP-18		<ul style="list-style-type: none"> > Rubber boot > BK 	30pcs/bottle 8pcs/zipper bag

donuts:

MBP-22		<ul style="list-style-type: none"> > Cable donut fits shift inner wire > BK 	200pcs/bottle 8pcs/zipper bag
MBP-23		<ul style="list-style-type: none"> > Cable donut fits brake inner wire > BK 	200pcs/bottle 8pcs/zipper bag



housing shield:

MBP-48		<ul style="list-style-type: none"> > Spiral housing shield fits 4~5mm housing > BK WT R Y PK B G O 	30pcs/bottle 4pcs/zipper bag
MBP-49		<ul style="list-style-type: none"> > Housing shield fits 5mm brake housing > BK WT R O B G PK 	30pcs/bottle 4pcs/zipper bag
MBP-50		<ul style="list-style-type: none"> > Housing shield fits 4mm shift housing > BK WT R O B G PK 	30pcs/bottle 4pcs/zipper bag








Cable tips

MBP-04		<ul style="list-style-type: none"> > Plastic tips for both brake and shift > BY 	400pcs/bottle 20pcs/zipper bag
---------------	---	--	-----------------------------------



PRODUCT	IMAGE	DESCRIPTION	QUANTITY
---------	-------	-------------	----------

MBP-46		<ul style="list-style-type: none"> > Cable tip fits 1.6mm brake inner wire and smaller > Alloy anodized > BK R B G SR GD 	600pcs/bottle 20pcs/zipper bag
MBP-47		<ul style="list-style-type: none"> > Cable tip fits 1.2mm shift inner wire and smaller > Alloy anodized > BK R B G SR GD 	600pcs/bottle 20pcs/zipper bag

Adjusters

MBP-06		<ul style="list-style-type: none"> > Frame shift adjuster > BK R B G SR 	30pcs/bottle 2pcs/zipper bag
MBP-07		<ul style="list-style-type: none"> > Inline shift adjuster > BK R B G 	30pcs/bottle 2pcs/zipper bag
MBP-09		<ul style="list-style-type: none"> > Index adjuster > BK R B G 	50pcs/bottle 2pcs/zipper bag
MBP-12		<ul style="list-style-type: none"> > M7 adjusting barrel > BK SR 	2pcs/zipper bag
MBP-13		<ul style="list-style-type: none"> > M10 adjusting barrel > BK SR 	20pcs/bottle 2pcs/zipper bag
MBP-30		<ul style="list-style-type: none"> > M6 x 20 adjusting barrel 	2pcs/zipper bag
MBP-59		<ul style="list-style-type: none"> > M7 adjusting barrel > Alloy > SR BK 	20pcs/bottle 2pcs/zipper bag

Pipe

MBP-17		<ul style="list-style-type: none"> > Adjustable guide pipe > BK 	100pcs/polybag 2pcs/zipper bag
MBP-51		<ul style="list-style-type: none"> > 90° stainless pipe > Alloy caps > SR 	100pcs/polybag 2pcs/zipper bag

PRODUCT / IMAGE / DESCRIPTION / QUANTITY

MBP-52



> 135° stainless pipe
> Alloy caps
> SR

100pcs/polybag
2pcs/zipper bag

MBP-53



> Flexible guide pipe
> BK R B G SR GD

100pcs/polybag
2pcs/zipper bag

Cable hanger

MBP-27



> Cable hanger (BMX)
> BK R B GD

1set/zipper bag

MBP-33



> Cable anchor
> Steel

1set/polybag
1set/zipper bag

MBP-34



> Yoke cable with galvanized head
> Stainless steel 300mm+MBP-46x1pc

1set/polybag
1set/zipper bag

MBP-57



> Yoke cable 84mm

1set/polybag
1set/zipper bag

Housing guide parts

hose connector:

MBP-01



> Angle adjustable
> Housing connector
> BK WT

50pcs/bottle
8pcs/zipper bag

MBP-11



> Housing connector
> BK

100pcs/bottle
8pcs/zipper bag

hose clip:

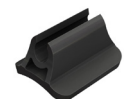
MBP-05



> Frame clips for housing
> BK

100pcs/bottle
10pcs/zipper bag

MBP-10



> Adhesive housing holder
> BK

14pcs/bottle
4pcs/zipper bag

PRODUCT / IMAGE / DESCRIPTION / QUANTITY

MBP-19



> Adjustable cable grip
> BK

1set/zipper bag

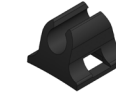
MBP-58



> Housing clips
> BK

50pcs/bottle
10pcs/zipper bag

MBP-60



> Cable grip
> BK

40pcs/bottle
2pcs/zipper bag

Others

MBP-16



> Zip tie
> 12 / 16 cm
> BK

1000pcs/polybag

MBP-20



> Hydraulic piston spacer
> BK

4pcs/zipper bag

MBP-28



> Rotor cleaner

150ml/bottle

MBP-29



> Colored V-brake shoes washers
> BK R B G SR GD P

1set/polybag
1set/zipper bag

Tools

MBP-21



> Cable cutter
> BK R

1pc/polybag

MBP-24



> Brake shoes tuner (BMX / ROAD)
> BK R

1pr/polybag
1pr/zipper bag

MBP-25



> Brake shoes tuner (MTB)
> BK R

1pr/polybag
1pr/zipper bag

MBP-26



> T25 allen key
> SR

50pcs/polybag
2pcs/zipper bag

MBP-35



> M2.5 allen key

50pcs/polybag
2pcs/zipper bag

BOLTS



BTS-01
 > SHIMANO PM-PM adapter bolts set
 > M6 x 35mm and M6 x 40mm bolt



BT-017
 > M5 x 10mm
 > Nylok anti-loosen treated
 > T25 torx



BT-031
 > M5 x 11mm
 > Nylok anti-loosen treated
 > T25 torx



BT-025
 > M5 x 10mm
 > Rotor bolts



BT-026
 > M6 x 18mm
 > Adapter bolts



BT-027
 > M5 x 18mm
 > Stem bolts



BT-028
 > M5 x 16mm
 > Bottle cages



BT-029
 > M6 x 30mm
 > Headset bolts cone head



BT-030
 > M6 x 29mm
 > Headset bolts cap head



BT-033
 > M5 x 16.5mm
 > Adapter bolts
 > Steel with spring washer
 > Use on HBP-61



BT-045
 > M5 x 18mm (total length)
 > Adapter bolts
 > Steel



BT-035
 > M6 x 20mm adapter bolts
 > Nylok treated
 > Use on HBP-68, HBP-69



BT-036
 > M6 x 18mm adapter bolts
 > 10B21 steel
 > Nylok treated
 > BK R G B BD



BT-039
 > M5 x 19mm
 > Adapter bolts
 > Steel with spring washer



BT-040
 > M5 x 24mm
 > Adapter bolts
 > Steel with spring washer
 > Use on HBP-62



BT-041
 > M5 x 29mm
 > Adapter bolts
 > Steel with spring washer
 > Use on HBP-62



BT-042
 > M5 x 34mm
 > Adapter bolts
 > Steel with spring washer
 > Use on HBP-62



BT-043
 > M5 x 39mm
 > Adapter bolts
 > Steel with spring washer
 > Use on HBP-62



BT-044
 > M5 x 44mm
 > Adapter bolts
 > Steel with spring washer
 > Use on HBP-62



BT-034
 > M5 x 46mm
 > Adapter bolts
 > Steel with spring washer
 > Use on HBP-62



BT-047
 > M5 x 14mm
 > 10B21 steel
 > Use on AP-13 and AP-14



BT-051
 > M5 x 14.5mm
 > Adapter bolts
 > Steel with spring washer
 > Use on AP-17

KITS



BK-01 | GR5 6A1-4V TITANIUM BOLTS FULL CNC MACHINED

BT-029 M6x30mm Headset bolt cone head	BT-030 M6x29mm Headset bolt cap head	BT-027 M5x18mm Stem Bolts	BT-026 M6x18mm Adaptors Bolts	BT-028 M5x16mm Bottle Cages Bolts BT-025 M5x10mm Rotor Bolts
---	--	---	---	---

MK-01 | MECHANICAL HOUSING KITS

MBP-44 Fits 5mm brake housing	MBP-42 Fits 5mm brake housing sealed	MBP-46 Fits 1.6mm brake inner wire	MBP-36 Fits 5mm brake housing	MBP-40 Fits 5mm brake housing	MBP-23 Fits brake inner wire
MBP-45 Fits 4mm shift housing	MBP-43 Fits 4mm shift housing sealed	MBP-47 Fits 1.2mm shift inner wire	MBP-37 Fits 4mm shift housing	MBP-41 Fits 4mm shift housing	MBP-22 Fits shift inner wire

HK-02 | HYDRAULIC HOSE KITS

Rubber Shield Alloy Shim Copper oil ring HBP-35 HBP-34 HBP-33 	Hydraulic Kits fit for FORMULA/MEGA/R/THE ONE HBP-22 HBP-15 HBP-17 	Hydraulic Kits fit for MAGURA MT2/4/6 HBP-23 HBP-16 HBP-18 	Hydraulic Kits fit for SHIMANO HBP-20 HBP-09 HBP-07 	Hydraulic Kits fit for AVID HBP-19 HBP-14 HBP-06 	Hydraulic Kits fit for HAYES HBP-21 HBP-10 HBP-08
--	---	---	--	---	--

HK-03 | BLEEDING KITS

HBP-38 M2.5 BLEEDING ADAPTER FITS HAYES EI-CAMINO	HBP-39 M3 BLEEDING ADAPTER FITS HOPE X2, MONO MINI	HBP-40 phi 3 FITS FORMULA 20CC SYRINGES INJECTOR	HBP-41 M4x0.7 BLEEDING ADAPTER FITS MAGURA LOUISE	HBP-42 M5x0.8 BLEEDING ADAPTER FITS HAYES/FORMULA/AVID/SHIMANO	HBP-65 50 c.c EMPTY BOTTLE
HBP-43 M6x0.75 BLEEDING ADAPTER FITS MAGURA MT4	HBP-44 M6x1.0 BLEEDING ADAPTER FITS MAGURA/HAYES/SHIMANO/HOPE	HBP-45 10CM PU HOSE	HBP-47 M8 OPEN WRENCH	HBP-46 CLIPS	HBP-48 CLIPS

HK-04 | SPRING COLLECTION

SP-10 	SP-11 	SP-17 	SP-31 	SP-38 	SP-42
SP-44 	SP-52 	SP-54 	SP-56 	SP-57 	SP-64

OR-01 | RUBBER SEAL COLLECTION

HBP-82 SHIMANO BR-R785, XTR BR-M9000 / BR-M9020, SLX BR-M7000, DEORE XT BR-M8000 / BR-M8020, ALFINE BR-S700	HBP-83 SHIMANO DEORE, XT, XTR	HBP-84 MAGURA MT4, 5, 6, 7, 8, Tektro Orion SL, Orion, Gemini SL, Volans, Auriga Tune, Auriga Sub, Auriga Twin, Dorado	HBP-85 MAGURA MT4	HBP-86 SRAM GUIDE ULTIMATE, HYDROR FOR FLATMOUNT, ELIXIR 5
HBP-87 SRAM ELIXIR 9, 7, XO TRIAL, XX WORLD CUP, XX, XO, HYDROR FOR POSTMOUNT	HBP-88 SRAM ELIXIR 9, 7, XO TRIAL, XX WORLD CUP, XX, XO, HYDROR FOR POSTMOUNT	HBP-89 FORMULA THE ONE, SRAM ELIXIR 5	HBP-90 FORMULA RX	HBP-91 HAYES PRIME, HFX-9, HFX-MAG

● Nitrile Butadiene Rubber for Mineral

● Ethylene Propylene Rubber for DOT

◎ 1:1 scale

IS-01 INDICATOR SPRING AND PIN COLLECTION

HBP-56



Clips fits M4/
M5 fixing screw

SPA-42



Indicator spring
Fits FORMULA MEGA
ONE, R1, RX, RO

SPA-44



Indicator spring
Fits AVID DB, AVID ELIXIR,
SRAM XX, XX WORLD CUP,
SRAM XO SERIES

SPA-52



Indicator spring
Fits SHIMANO BR-CX77,
RS-785, R785, R517, R317,
XTR BR-M9000, M9020,
M987, M985, DEORE BR-M615,
XT BR-M8000, M785, SLX
BR-M7000, M675, M666,
ALFINE BR-S700

HBP-78



M4 x 27 bolt
with indicator mark
Fits MAGURA MT 2/4/6



PK-01 DISC BRAKE PIN COLLECTION

HBP-54



M4x36 BOLTS
FITS HAYES RYDE/DYNO

HBP-52



M4x22 BOLTS
FITS AVID ELIXIR 5/7/9
GUIDE CODE/TRAIL

HBP-50



35MM PIN
FITS SHIMANO DEORE/
AVID ELIXIR 1/3

HBP-56



CLIPS FITS M4/M5
FIXING SCREW

HBP-53



M4x27 BOLTS
FITS SHIMANO XT/XTR,
MAGURA MT 2/4/6/8,
TEKTRO, FORMULA ORO

HBP-55



5x25 BOLTS
FITS FORMULA MEGA/
HOPE E4/V4/X2/V2

HBP-51



45MM PIN
FITS HOPE

HBP-49



4x22.5 SCREW
FITS MAGURA MARTA/
GUSTAVA/LOUISE 2007



OEM PACKAGING



OEM BRAKE SHOES CARDBOARD BOX

> 25pairs
> 23x14x7 cm



OEM DISC PADS CARDBOARD BOX

> 25pairs
> 14.1x10.4x3.5 cm



OEM HOUSING and WIRE CARDBOARD BOX

> 30 or 50 meters housing / BOX
> 100 pieces inner wire / BOX
> 34x34x6 cm

AM PACKAGING



BRAKE SHOES

> Double blister card
> 6.5x11 cm



ROTOR

> Double blister box
>30.5x23.5 cm for size: 180 and 203mm
>23.9x19.2 cm for size: 140 and 160mm



DISC PADS

> Double blister card
> 6.5x11 cm



ZIPPER BAG

> 2.2 or 2.5 or 3 meters housing
> 24x20 cm



INDICATOR SPRING

> Double blister card
> 6.5x11 cm



ZIPPER BAG

> Parts and Inner wire
> 15x13 cm



ROTOR SHIELD

> Colored box
> 20x2.9x21 cm

NOTES



NOTES





www.brakco.com

BRAKCO INDUSTRY CO., LTD.

No.577, SEC. 1, FANHUA RD., FUSING TOWNSHIP,
CHANGHUA COUNTY 506, TAIWAN

TEL: 886-4-7794916 FAX: 886-4-7794917

E-MAIL: brakco@brakco.com.tw